



# INTERNATIONAL CONFERENCE

ON

## INTERDISCIPLINARY APPROACHES TO SUSTAINABLE DEVELOPMENT, INNOVATION AND KNOWLEDGE TRANSFORMATION

### CONFERENCE CONVENER:

**Dr. Devendra Bhongade**

PRINCIPAL, ANTODYAY INSTITUTE OF SCIENCES AND  
RESEARCH CENTRE, DEVGRAM, NAGPUR, MAHARASHTRA

### TRAVEL PARTNER:



# ANTODYAY INSTITUTE OF SCIENCES AND RESEARCH CENTRE

DEVGRAM, TAL.  
NARKHED - DIST.  
NAGPUR





# CONFERENCE *Theme*

INTERDISCIPLINARY APPROACHES TO SUSTAINABLE DEVELOPMENT, INNOVATION AND KNOWLEDGE TRANSFORMATION

# CONFERENCE *Sub-Themes*

## CONFERENCE DETAILS

### VENUE:

Ashlee Plaza Patong Hotel and Spa, Phuket or Similar

### DATE:

May 24 to May 30, 2026

- Culture, Ethics and Sustainability in the Age of Innovation
- Indigenous Knowledge Systems and Sustainable Development
- Literature, Language and Environmental Consciousness
- Philosophy, Ethics and Responsible Use of Technology
- Heritage Conservation and Sustainable Cultural Practices
- Humanities Perspectives on Climate Change and Human Values

- Sustainable Business Models and Green Entrepreneurship
- Innovation, Startups and Economic Transformation
- ESG (Environmental, Social and Governance) Practices in Corporates
- Digital Transformation and Sustainable Management
- Financial Inclusion, FinTech and Economic Development
- Strategic Management for Sustainable Growth

- Emerging Technologies for Sustainable Development
- Artificial Intelligence, Data Science and Green Innovation
- Renewable Energy, Smart Systems and Sustainable Engineering
- Biotechnology and Sustainable Health Solutions
- Climate Science, Environmental Technology and Resilience
- Innovation in Science for Achieving SDGs

- Knowledge Organization and Access for Sustainable Development
- Digital Libraries, Repositories and Knowledge Transformation
- AI, Big Data and Information Management
- Open Access, Research Visibility and Scholarly Communication
- Libraries as Knowledge Hubs for Innovation and Society
- Information Literacy and Lifelong Learning in Digital Era

- Sustainable Development: Social, Economic and Policy Dimensions
- Governance, Public Policy and Inclusive Growth
- Education, Skill Development and Knowledge Society

- Gender Equity, Social Justice and Sustainable Futures
- Urbanization, Rural Development and Social Innovation



## TOUR DETAILS

### TOUR PRICE

**RS. 85,000/-** Per Person | Including Taxes

### CONFERENCE REGISTRATION FEES

**RS. 3,000/-** Per Person | Including Taxes

## FLIGHT Details

### NAGPUR TO PHUKET FLIGHT DETAILS

Departure (Nagpur): May 24, 2026  
Time: 18:50

Check In: 25Kgs | Cabin: 7Kgs

### KRABI TO NAGPUR FLIGHT DETAILS

Departure (Krabi): May 30, 2026  
Time: 21:45

Arrival (Nagpur): May 31, 2026  
Time: 07:45

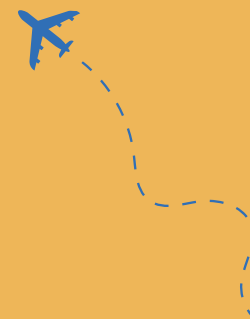
Check In: 20Kgs | Cabin: 7Kgs

## INCLUSIONS

- Flights (Ex - Nagpur)
- Meals (as per itinerary)
- Accommodation (4 Star)
- Sightseeing (as per itinerary)
- All Entry Fees
- Thailand Travel Insurance

## HOTEL DETAILS

- **Phuket**
  - Ashlee Plaza Patong Hotel and Spa or Similar
- **Krabi**
  - Ava Sea Resort or Similar



# TOUR *Sight Seeing*

- Big Buddha
- Beach at Phuket (Karon Beach)
- Tiger park
- Gems Gallery
- Wat Chalong Temple
- Phi Phi Island
- Snorkelling
- Four Island
- Wat Tham Sua
- Muds Crab Sculture
- Dolphin Show
- Phuket Old Town
- Phuket Night Market
- Krabi City Tour

# MEAL *Inclusions*

- Full Course Breakfast
- Lunch / Snack Boxes
- Dinner at Indian Restaurants
- Daily 02 x 500ml Mineral Water Bottles
- Gala Dinner
- Unlimited flow of Soft Drinks and Water during Gala Dinner
- High Tea

## Note:

Both **Veg and Non-Veg** options are available for the above mentioned meals in the tour

**Note:** The itinerary is subject to change without notice or discussion with the organizer including the sequence and place of visit (sightseeing spots). Sightseeing depends on the on site availability and open/close status as per the country's policy.

# DOCUMENTS *Checklist*

- Aadhar Card
- Pan Card
- Hotel Vouchers
- Flight Tickets
- Emergency Contact Details
- Google Form (to be filled by the passenger)
- Emergency Money for Personal Use.

# CONTACT *Details*

---

**DR. DEVENDRA BHONGADE**

+91 - 9823421427

**DR. MANGLA HIRWADE**

+91 - 9850341329

**DR. VAISHALI GUDADHE (CHOUKHANDE)**

+91 - 9403740095

# ACADEMIC *Partners*

---

# OTHER *Details*

---

