



JEEVAN VIKAS MAHAVIDYALAYA, DEVGRAM

Tah. Narkhed, Dist. Nagpur-441301

(Permanent Affiliated to Rashtrasant Tukadoji Maharaj Nagpur University, Nagpur)

College Code: 341

(NAAC Accredited in Cycle II with 'B++' Grade, CGPA 2.93)

ISO 9001:2015 Certified, NIRF Participated

Website: www.jvmd.co.in

E-mail: jvmthugaondeo@gmail.com

JVMD/2022/14

Date: 01/01/2022

Declaration

This is to declare that the information, reports, true copies and numerical data etc. furnished in this file as supporting documents is verified by IQAC and found correct.

Hence this certificate.

Convener
Internal Quality Assurance
Cell (IQAC), JVM Thugaondeo
Dist. Nagpur (M.S.)



Principal
Jeevan Vikas Mahavidyalaya
Devgram (Thugaondeo)
Tah. Narkhed, Dist. Nagpur

1.4 Feedback System

1.4.1- Institution obtains feedback on the syllabus and its transaction at the institution from the following stakeholders Students Teachers Employers Alumni

A. All of the above



JEEVAN VIKAS MAHAVIDYALYA, DEVGRAM

Tah. Narkhed, Dist. Nagpur-441301 (M.S.)

(Permanent Affiliated to Rashtrasant Tukadoji Maharaj Nagpur University, Nagpur)

College Code: 341

(NAAC Accredited in Cycle II with 'B++' Grade, CGPA 2.93)

ISO 9001:2015 Certified, NIRF Participated

Website: www.jvmd.co.in

E-mail: jvmthugaondeo@gmail.com

Academic Session – 2022-23

Feedback from students on Teaching Learning and Evaluation

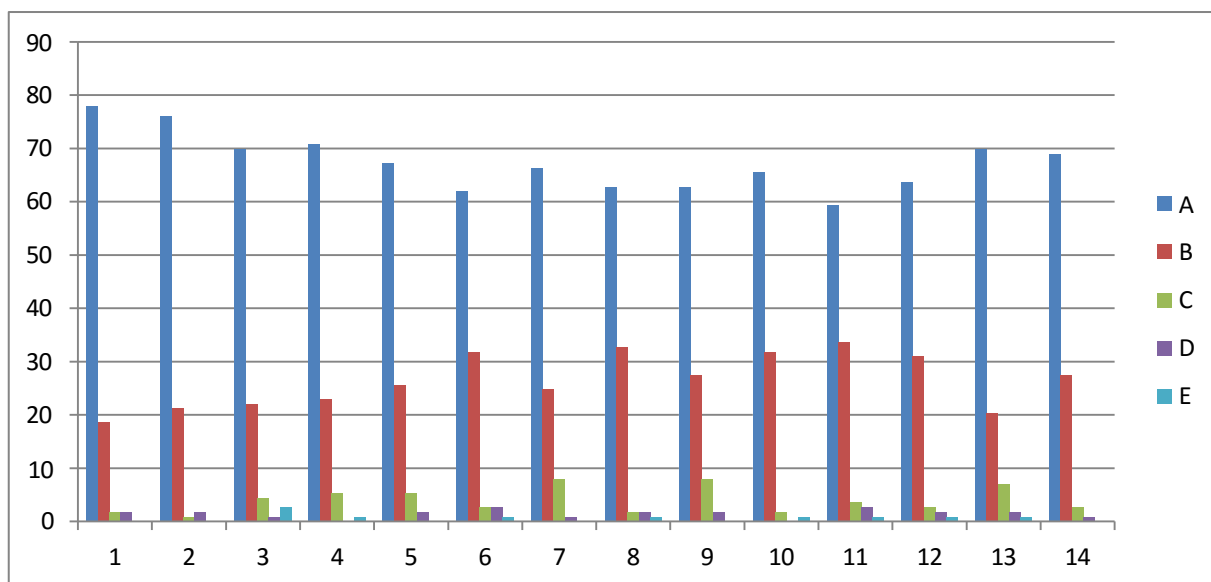
Bachelor of Science

Feedback Analysis

Learners have given their Responses on a 5 -point Likert Scale for-

Option A- Strongly agree-	3.369
Option B- Agree-	1.327
Option C- Neither agree nor disagree -	0.199
Option D- Disagree-	0.072
Option E- Strongly disagree-	0.031

On X-axis – Question number



On Y-axis- Response in %

- A- Strongly agree
- B- Agree
- C- Neither agree nor disagree
- D- Disagree
- E- Strongly disagree

For question 1- 78% students strongly agreed, 19% agreed, 2% neither agreed nor disagreed and 2% disagreed.

Interpretation- 78% students strongly agreed, 19% agreed, 2% neither agreed nor disagreed and 2% disagreed that they understand the depth of the course.

For question 2- 76% students strongly agreed, 21% agreed, 1% neither agreed nor disagreed and 2% disagreed.

Interpretation- 76% students strongly agreed, 21% agreed, 1% neither agreed nor disagreed and 2% disagreed that extent of coverage of course taught by teacher.

For question 3- 70% students strongly agreed, 22% agreed, 4% neither agreed nor disagreed, 1% disagreed and 3% strongly disagreed.

Interpretation- 70% students strongly agreed, 22% agreed, 4% neither agreed nor disagreed, 1% disagreed and 3% strongly disagreed that the ability of the teacher to relate the topic with current situation.

For question 4- 71% students strongly agreed, 23% agreed, 5% neither agreed nor disagreed and 1% strongly disagreed.

Interpretation- 71% students strongly agreed, 23% agreed, 5% neither agreed nor disagreed and 1% strongly disagreed that the entire syllabus is completed in the stipulated time frame.

For question 5- 67% students strongly agreed, 26% agreed, 5% neither agreed nor disagreed and 2% strongly disagreed.

Interpretation- 67% students strongly agreed, 26% agreed, 5% neither agreed nor disagreed and 2% strongly disagreed that teachers are punctual and regular in taking practical and tutorial classes.

For question 6- 62% students strongly agreed, 32% agreed, 3% neither agreed nor disagreed, 3% disagreed and 1% strongly disagreed.

Interpretation- 62% students strongly agreed, 32% agreed, 3% neither agreed nor disagreed, 3% disagreed and 1% strongly disagreed that the ICT in the form of web sources, power point presentations are a regular feature of the classroom.

For question 7- 66% students strongly agreed, 20% agreed, 10% neither agreed nor disagreed and 1% disagreed.

Interpretation- 66% students strongly agreed, 20% agreed, 10% neither agreed nor disagreed and 1% disagreed that explanation of textual reading material with clarity and relevance.

For question 8- 63% students strongly agreed, 33% agreed, 2% neither agreed nor disagreed, 2% disagreed and 1% strongly agreed.

Interpretation- 63% students strongly agreed, 33% agreed, 2% neither agreed nor disagreed, 2% disagreed and 1% strongly agreed that information regarding additional reading sources is given.

For question 9- 63% students strongly agreed, 27% agreed, 8% neither agreed nor disagreed and 1% disagreed.

Interpretation- 63% students strongly agreed, 27% agreed, 8% neither agreed nor disagreed and 1% disagreed that values are taught from the prescribed syllabus in terms of knowledge, concepts, manual skills, analytical abilities and broadening perspectives.

For question 10- 65% students strongly agreed, 32% agreed, 2% neither agreed nor disagreed and 1% strongly disagreed.

Interpretation- 65% students strongly agreed, 32% agreed, 2% neither agreed nor disagreed and 1% strongly disagreed that periodical assessments are conducted as per the given schedule.

For question 11- 59% students strongly agreed 34% agreed, 4% neither agreed nor disagreed and 3% disagreed.

Interpretation- 59% students strongly agreed 34% agreed, 4% neither agreed nor disagreed and 3% disagreed that evaluation is fair and unbiased.

For question 12- 64% students strongly agreed, 31% agreed and 3% neither agreed nor disagreed, 2% disagreed and 1% strongly disagreed.

Interpretation- 64% students strongly agreed, 31% agreed and 3% neither agreed nor disagreed, 2% disagreed and 1% strongly disagreed that regular and timely feedback is given for further improvement.

For question 13- 70% students strongly agreed, 20% agreed, 7% neither agreed nor disagreed, 2% agreed and 1% strongly disagreed.

Interpretation- 70% students strongly agreed, 20% agreed, 7% neither agreed nor disagreed, 2% agreed and 1% strongly disagreed that teachers are accessible even after lectures.

For question 14- 69% students strongly agreed 27% agreed, 3% neither agreed nor disagreed and 1% disagreed.

Interpretation- 69% students strongly agreed 27% agreed, 3% neither agreed nor disagreed and 1% disagreed that teachers are instrumental in personality development of the students.



JEEVAN VIKAS MAHAVIDYALYA, DEVGRAM

Tah. Narkhed, Dist. Nagpur-441301 (M.S.)

(Permanent Affiliated to Rashtrasant Tukadoji Maharaj Nagpur University, Nagpur)

College Code: 341

(NAAC Accredited in Cycle II with 'B++' Grade, CGPA 2.93)

ISO 9001:2015 Certified, NIRF Participated

Website: www.jvmd.co.in

E-mail: jvmthugaondeo@gmail.com

Academic Session – 2022-23

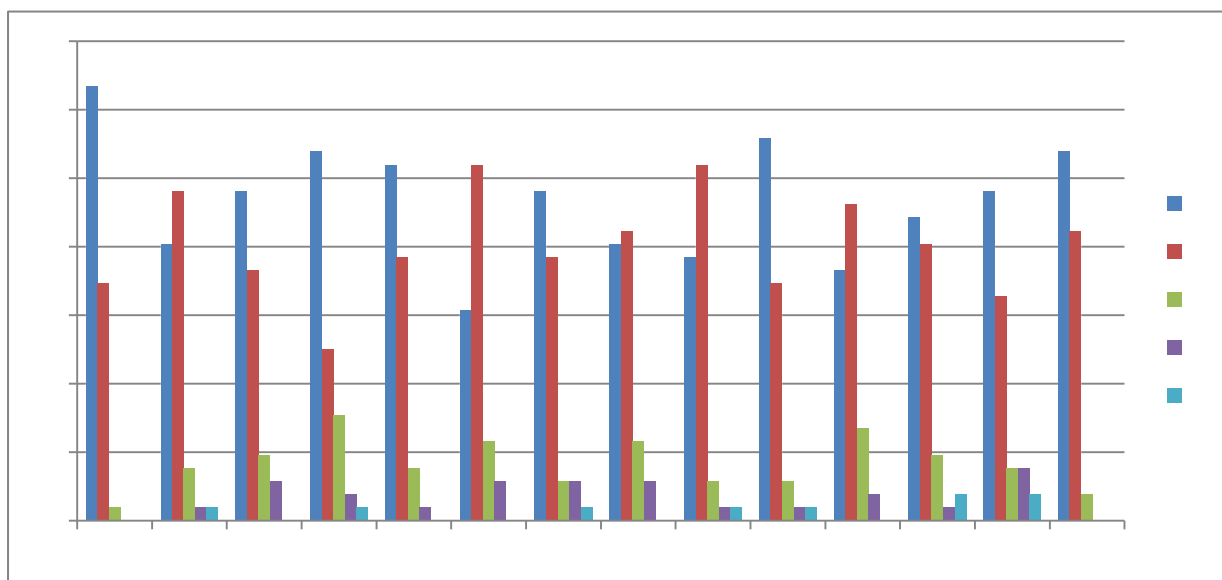
Feedback from students on Teaching Learning and Evaluation

Bachelor of Commerce

Feedback Analysis

Learners have given their Responses on a 5 -point Likert Scale for-

Option A- Strongly agree-	2.335
Option B- Agree-	2.012
Option C- Neither agree nor disagree -	0.418
Option D- Disagree-	0.171
Option E- Strongly disagree-	0.061



On X-axis – Question number

On Y-axis- Response in %

- A- Strongly agree
- B- Agree
- C- Neither agree nor disagree
- D- Disagree
- E- Strongly disagree

For question 1 – 63% students strongly agreed, 35% agreed and 2% neither agreed nor disagreed.

Interpretation- 63% students strongly agreed, 35% agreed and 2% neither agreed nor disagreed that they understand the depth of the course.

For question 2- 40% students strongly agreed, 48% agreed, 8% neither agreed nor disagreed, 2% disagreed and 2% strongly disagreed.

Interpretation- 40% students strongly agreed, 48% agreed, 8% neither agreed nor disagreed, 2% disagreed and 2% strongly disagreed that extent of coverage of course taught by teacher.

For question 3- 48% students strongly agreed, 37% agreed, 10% neither agreed nor disagreed and 6% disagreed.

Interpretation- 48% students strongly agreed, 37% agreed, 10% neither agreed nor disagreed and 6% disagreed that the ability of the teacher to relate the topic with current situation.

For question 4- 54% students strongly agreed, 25% agreed, 15% neither agreed nor disagreed, 4% disagreed and 2% strongly disagreed.

Interpretation- 54% students strongly agreed, 25% agreed, 15% neither agreed nor disagreed, 4% disagreed and 2% strongly disagreed that the entire syllabus is completed in the stipulated time frame.

For question 5- 52% students strongly agreed, 28% agreed, 8% neither agreed nor disagreed and 2% disagreed.

Interpretation- 52% students strongly agreed, 28% agreed, 8% neither agreed nor disagreed and 2% disagreed that teachers are punctual and regular in taking tutorial classes.

For question 6- 31% students strongly agreed, 52% agreed, 11% neither agreed nor disagreed and 6% disagreed.

Interpretation- 31% students strongly agreed, 52% agreed, 11% neither agreed nor disagreed and 6% disagreed that the ICT in the form of web sources, power point presentations are a regular feature of the classroom.

For question 7- 48% students strongly agreed, 38% agreed, 6% neither agreed nor disagreed, 6% disagreed and 2% strongly disagreed.

Interpretation- 48% students strongly agreed, 38% agreed, 6% neither agreed nor disagreed, 6% disagreed and 2% strongly disagreed that explanation of textual reading material with clarity and relevance.

For question 8- 40% students strongly agreed, 42% agreed, 12% neither agreed nor disagreed and 6% disagreed.

Interpretation- 40% students strongly agreed, 42% agreed, 12% neither agreed nor disagreed and 6% disagreed that information regarding additional reading sources is given.

For question 9- 38% students strongly agreed, 52% agreed, 6% neither agreed nor disagreed, 2% disagreed and 2% strongly disagreed.

Interpretation- 38% students strongly agreed, 52% agreed, 6% neither agreed nor disagreed, 2% disagreed and 2% strongly disagreed that values are taught from the prescribed syllabus in terms of knowledge, concepts, manual skills, analytical abilities and broadening perspectives.

For question 10- 56% students strongly agreed, 35% agreed, 6% neither agreed nor disagreed, 2% disagreed and 2% strongly disagreed.

Interpretation- 56% students strongly agreed, 35% agreed, 6% neither agreed nor disagreed, 2% disagreed and 2% strongly disagreed that periodical assessments are conducted as per the given schedule.

For question 11- 37% students strongly agreed, 46% agreed, 13% neither agreed nor disagreed and 4% disagreed.

Interpretation- 37% students strongly agreed, 46% agreed, 13% neither agreed nor disagreed and 4% disagreed that evaluation is fair and unbiased.

For question 12- 44% students strongly agreed, 40% agreed, 10% neither agreed nor disagreed, 2% disagreed and 4% strongly disagreed.

Interpretation- 44% students strongly agreed, 40% agreed, 10% neither agreed nor disagreed, 2% disagreed and 4% strongly disagreed that regular and timely feedback is given for further improvement.

For question 13- 48% students strongly agreed, 33% agreed, 8% neither agreed nor disagreed, 8% disagreed and 4% strongly disagreed.

Interpretation- 48% students strongly agreed, 33% agreed, 8% neither agreed nor disagreed, 8% disagreed and 4% strongly disagreed that teachers are accessible even after lectures.

For question 14- 54% students strongly agreed, 42% agreed and 4% neither agreed nor disagreed.

Interpretation- 54% students strongly agreed, 42% agreed and 4% neither agreed nor disagreed that teachers are instrumental in personality development of the students.



JEEVAN VIKAS MAHAVIDYALYA, DEVGRAM

Tah. Narkhed, Dist. Nagpur-441301 (M.S.)

(Permanent Affiliated to Rashtrasant Tukadoji Maharaj Nagpur University, Nagpur)

College Code: 341

(NAAC Accredited in Cycle II with 'B++' Grade, CGPA 2.93)

ISO 9001:2015 Certified, NIRF Participated

Website: www.jvmd.co.in

E-mail: jvmthugaondeo@gmail.com

Academic Session – 2022-23

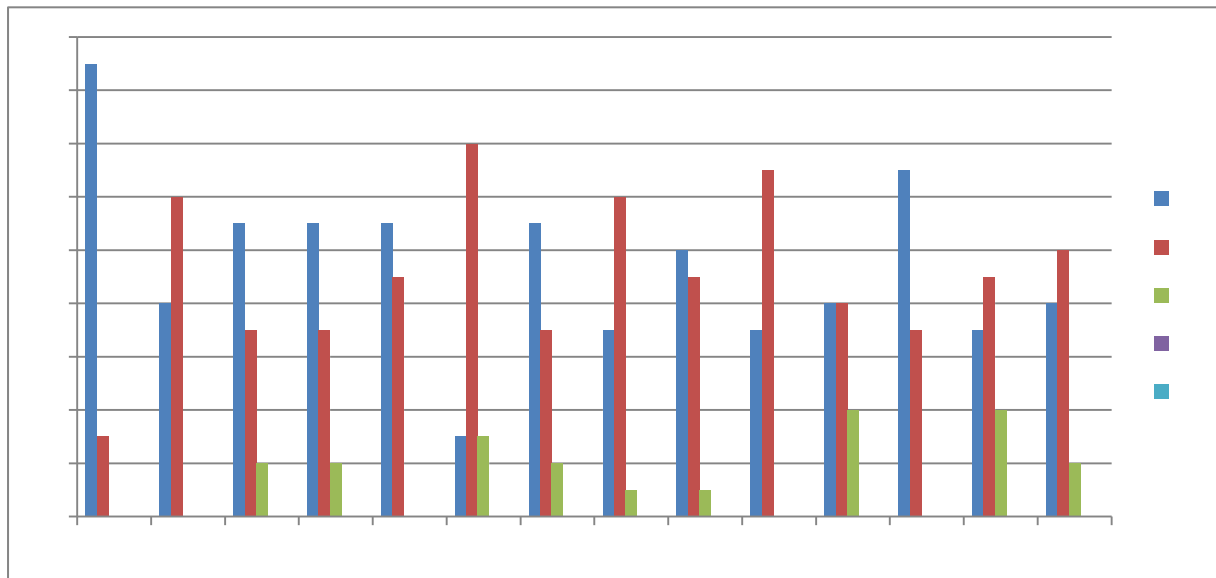
Feedback from students on Teaching Learning and Evaluation

Bachelor of Arts

Feedback Analysis

Learners have given their Responses on a 5 -point Likert Scale for-

Option A- Strongly agree-	2.36
Option B- Agree-	2.27
Option C- Neither agree nor disagree -	0.37
Option D- Disagree-	0.00
Option E- Strongly disagree-	0.00



On X-axis – Question number

On Y-axis- Response in %

- A- Strongly agree
- B- Agree
- C- Neither agree nor disagree
- D- Disagree
- E- Strongly disagree

For question 1 – 85% students strongly agreed and 15% agreed.

Interpretation- 85% students strongly agreed and 15% agreed that they understand the depth of the course.

For question 2- 40% students strongly agreed and 60% agreed.

Interpretation- 40% students strongly agreed and 60% agreed that extent of coverage of course taught by teacher.

For question 3- 55% students strongly agreed, 35% agreed and 10% neither agreed nor disagreed.

Interpretation- 55% students strongly agreed, 35% agreed and 10% neither agreed nor disagreed that the ability of the teacher to relate the topic with current situation.

For question 4- 55% students strongly agreed, 35% agreed and 10% neither agreed nor disagreed.

Interpretation- 55% students strongly agreed, 35% agreed and 10% neither agreed nor disagreed that the entire syllabus is completed in the stipulated time frame.

For question 5- 55% students strongly agreed and 45% agreed.

Interpretation- 55% students strongly agreed and 45% agreed that teachers are punctual and regular in taking tutorial classes.

For question 6- 15% students strongly agreed, 70% agreed and 15% neither agreed nor disagreed.

Interpretation- 15% students strongly agreed, 70% agreed and 15% neither agreed nor disagreed that the ICT in the form of web sources, power point presentations are a regular feature of the classroom.

For question 7- 55% students strongly agreed, 35% agreed and 10% neither agreed nor disagreed.

Interpretation- 55% students strongly agreed, 35% agreed and 10% neither agreed nor disagreed that explanation of textual reading material with clarity and relevance

For question 8- 35% students strongly agreed, 60% agreed and 5% neither agreed nor disagreed.

Interpretation- 35% students strongly agreed, 60% agreed and 5% neither agreed nor disagreed that information regarding additional reading sources is given.

For question 9- 50% students strongly agreed, 45% agreed and 5% neither agreed nor disagreed.

Interpretation- 50% students strongly agreed, 45% agreed and 5% neither agreed nor disagreed that values are taught from the prescribed syllabus in terms of knowledge, concepts, manual skills, analytical abilities and broadening perspectives.

For question 10- 35% students strongly agreed and 65% agreed.

Interpretation- 35% students strongly agreed and 65% agreed that Periodical assessments are conducted as per the given schedule.

For question 11- 40% students strongly agreed, 40% agreed and 20% neither agreed nor disagreed.

Interpretation- 40% students strongly agreed, 40% agreed and 20% neither agreed nor disagreed that evaluation is fair and unbiased.

For question 12- 65% students strongly agreed and 35% agreed.

Interpretation- 65% students strongly agreed and 35% agreed that regular and timely feedback is given for further improvement.

For question 13- 35% students strongly agreed, 45% agreed and 20% neither agreed nor disagreed.

Interpretation- 35% students strongly agreed, 45% agreed and 20% neither agreed nor disagreed that teachers are accessible even after lectures.

For question 14- 40% students strongly agreed 50% agreed and 10% neither agreed nor disagreed.

Interpretation- 40% students strongly agreed 50% agreed and 10% neither agreed nor disagreed that teachers are instrumental in personality development of the students.



JEEVAN VIKAS MAHAVIDYALYA, DEVGRAM

Tah. Narkhed, Dist. Nagpur-441301 (M.S.)

(Permanent Affiliated to Rashtrasant Tukadoji Maharaj Nagpur University, Nagpur)

College Code: 341

(NAAC Accredited in Cycle II with 'B++' Grade, CGPA 2.93)

ISO 9001:2015 Certified, NIRF Participated

Website: www.jvmd.co.in

E-mail: jvmthugaondeo@gmail.com

Academic Session – 2022-23

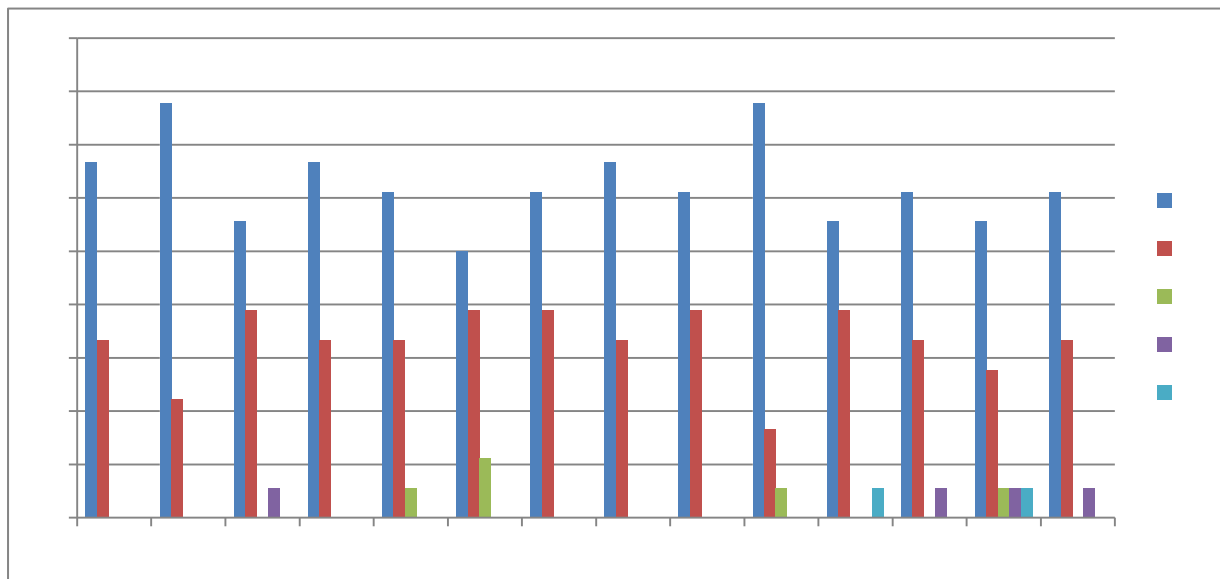
Feedback from students on Teaching Learning and Evaluation

Master of Science

Feedback Analysis

Learners have given their Responses on a 5 -point Likert Scale for-

Option A- Strongly agree-	3.134
Option B- Agree-	1.646
Option C- Neither agree nor disagree -	0.099
Option D- Disagree-	0.079
Option E- Strongly disagree-	0.039



On X-axis – Question number

On Y-axis- Response in %

- A- Strongly agree
- B- Agree
- C- Neither agree nor disagree
- D- Disagree
- E- Strongly disagree

For question 1 – 67% students strongly agreed and 33% agreed.

Interpretation- 67% students strongly agreed and 33% agreed they understand the depth of the course.

For question 2- 78% students strongly agreed and 22% agreed.

Interpretation- 78% students strongly agreed and 22% agreed that extent of coverage of course taught by teacher.

For question 3- 56% students strongly agreed, 39% students strongly agreed and 6% disagreed.

Interpretation- 56% students strongly agreed, 39% students strongly agreed and 6% disagreed that the ability of the teacher to relate the topic with current situation.

For question 4- 67% students strongly agreed and 33% agreed.

Interpretation- 67% students strongly agreed and 33% agreed that the entire syllabus is completed in the stipulated time frame.

For question 5- 61% students strongly agreed, 33% agreed and 6% neither agreed nor disagreed.

Interpretation- 61% students strongly agreed, 33% agreed and 6% neither agreed nor disagreed that teachers are punctual and regular in taking practical and tutorial classes.

For question 6- 50% students strongly agreed, 39% agreed and 11% neither agreed nor disagreed.

Interpretation- 50% students strongly agreed, 39% agreed and 11% neither agreed nor disagreed that the ICT in the form of web sources, power point presentations are a regular feature of the classroom.

For question 7- 61% students strongly agreed and 39% agreed.

Interpretation- 61% students strongly agreed and 39% agreed that explanation of textual reading material with clarity and relevance

For question 8- 67% students strongly agreed and 33% agreed.

Interpretation- 67% students strongly agreed and 33% agreed that information regarding additional reading sources is given.

For question 9- 61% students strongly agreed and 39% agreed.

Interpretation- 61% students strongly agreed and 39% agreed that values are taught from the prescribed syllabus in terms of knowledge, concepts, manual skills, analytical abilities and broadening perspectives.

For question 10- 78% students strongly agreed, 17% agreed and 6% neither agreed nor disagreed.

Interpretation- 78% students strongly agreed, 17% agreed and 6% neither agreed nor disagreed that periodical assessments are conducted as per the given schedule.

For question 11- 56% students strongly agreed, 39% agreed and 5% strongly disagreed.

Interpretation- 56% students strongly agreed, 39% agreed and 5% strongly disagreed that evaluation is fair and unbiased.

For question 12- 61% students strongly agreed, 33% agreed and 6% disagreed.

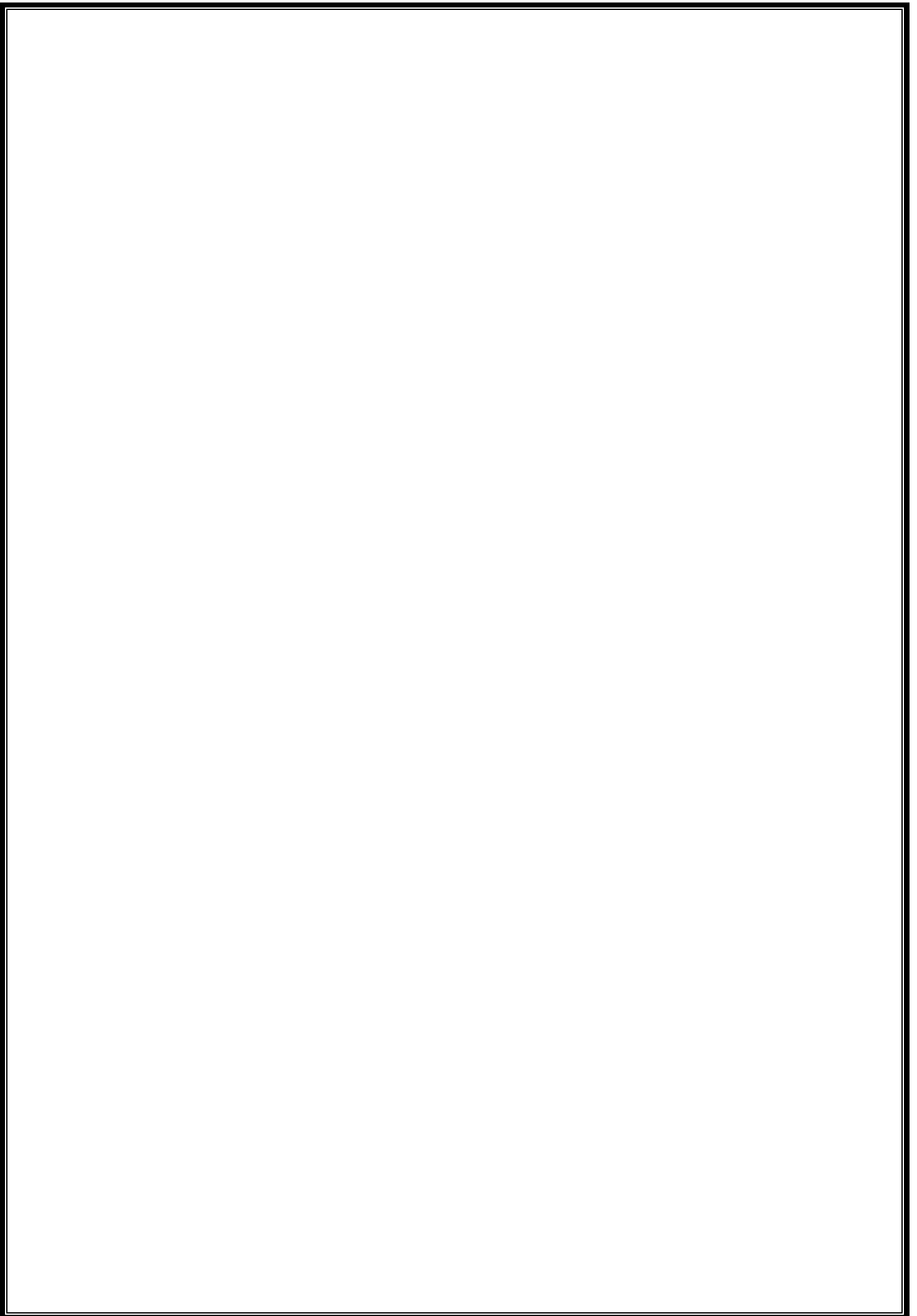
Interpretation- 61% students strongly agreed, 33% agreed and 6% disagreed that regular and timely feedback is given for further improvement.

For question 13- 55% students strongly agreed, 28% agreed, 6% neither agreed nor disagreed, 6% disagreed and 5% strongly disagreed.

Interpretation- 55% students strongly agreed, 28% agreed, 6% neither agreed nor disagreed, 6% disagreed and 5% strongly disagreed that teachers are accessible even after lectures.

For question 14- 61% students strongly agreed, 33% agreed and 6% disagreed.

Interpretation- 61% students strongly agreed, 33% agreed and 6% disagreed that teachers are instrumental in personality development of the students.





JEEVAN VIKAS MAHAVIDYALYA, DEVGAM

Tah. Narkhed, Dist. Nagpur-441301 (M.S.)

(Permanent Affiliated to Rashtrasant Tukadoji Maharaj Nagpur University, Nagpur)

College Code: 341

(NAAC Accredited in Cycle II with 'B++' Grade, CGPA 2.93)

ISO 9001:2015 Certified, NIRF Participated

Website: www.jvmd.co.in

E-mail: jvmthugaondeo@gmail.com

Academic Session – 2022-23

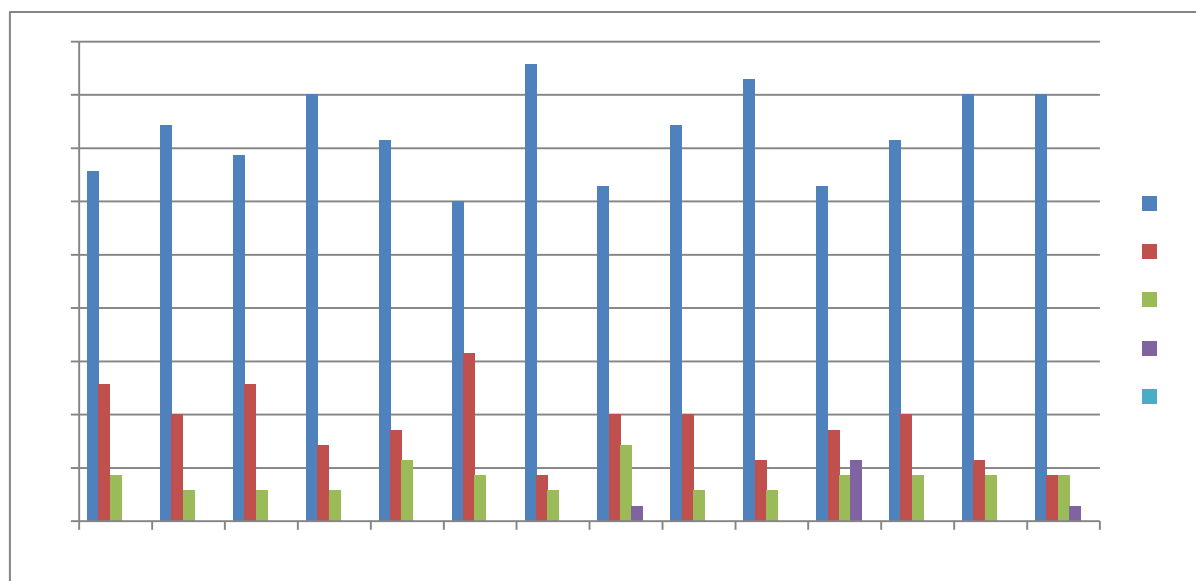
Feedback from students on Teaching Learning and Evaluation

Bachelor of Vocation

Feedback Analysis

Learners have given their Responses on a 5 -point Likert Scale for-

Option A- Strongly agree-	3.64
Option B- Agree-	1.90
Option C- Neither agree nor disagree -	0.40
Option D- Disagree-	0.06
Option E- Strongly disagree-	0.00



On X-axis – Question number

On Y-axis- Response in %

- A- Strongly agree
- B- Agree
- C- Neither agree nor disagree
- D- Disagree
- E- Strongly disagree

For question 1 – 66% students strongly agreed, 26% agreed and 8% neither agreed nor disagreed.

Interpretation- 66% students strongly agreed, 26% agreed and 8% neither agreed nor disagreed that they understand the depth of the course.

For question 2- 74% students strongly agreed, 20% agreed and 6% neither agreed nor disagreed.

Interpretation- 74% students strongly agreed, 20% agreed and 6% neither agreed nor disagreed that extent of coverage of course taught by teacher.

For question 3- 69% students strongly agreed, 26% agreed and 6% neither agreed nor disagreed.

Interpretation- 69% students strongly agreed, 26% agreed and 6% neither agreed nor disagreed that the ability of the teacher to relate the topic with current situation.

For question 4- 80% students strongly agreed, 14% agreed and 6% neither agreed nor disagreed.

Interpretation- 80% students strongly agreed, 14% agreed and 6% neither agreed nor disagreed that the entire syllabus is completed in the stipulated time frame.

For question 5- 71% students strongly agreed, 17% agreed and 12% neither agreed nor disagreed.

Interpretation- 71% students strongly agreed, 17% agreed and 12% neither agreed nor disagreed that teachers are punctual and regular in taking practical and tutorial classes.

For question 6- 60% students strongly agreed, 31% agreed and 9% neither agreed nor disagreed.

Interpretation- 60% students strongly agreed, 31% agreed and 9% neither agreed nor disagreed that the ICT in the form of web sources, power point presentations are a regular feature of the classroom.

For question 7- 86% students strongly agreed, 8% agreed and 6% neither agreed nor disagreed.

Interpretation- 86% students strongly agreed, 8% agreed and 6% neither agreed nor disagreed that explanation of textual reading material with clarity and relevance

For question 8- 63% students strongly agreed, 20% agreed, 14% neither agreed nor disagreed and 3% disagreed.

Interpretation- 63% students strongly agreed, 20% agreed, 14% neither agreed nor disagreed and 3% disagreed that information regarding additional reading sources is given.

For question 9- 74% students strongly agreed, 20% agreed and 6% neither agreed nor disagreed.

Interpretation- 74% students strongly agreed, 20% agreed and 6% neither agreed nor disagreed that values are taught from the prescribed syllabus in terms of knowledge, concepts, manual skills, analytical abilities and broadening perspectives.

For question 10- 83% students strongly agreed, 11% agreed and 8% neither agreed nor disagreed.

Interpretation- 83% students strongly agreed, 11% agreed and 8% neither agreed nor disagreed that periodical assessments are conducted as per the given schedule.

For question 11- 63% students strongly agreed, 17% agreed, 9% neither agreed nor disagreed and 11% disagreed.

Interpretation- 63% students strongly agreed, 17% agreed, 9% neither agreed nor disagreed and 11% disagreed that evaluation is fair and unbiased.

For question 12- 71% students strongly agreed, 20% agreed and 9% neither agreed nor disagreed.

Interpretation- 71% students strongly agreed, 20% agreed and 9% neither agreed nor disagreed that regular and timely feedback is given for further improvement.

For question 13- 80% students strongly agreed, 11% agreed and 9% neither agreed nor disagreed.

Interpretation- 80% students strongly agreed, 11% agreed and 9% neither agreed nor disagreed that teachers are accessible even after lectures.

For question 14- 80% students strongly agreed, 9% agreed, 8% neither agreed nor disagreed and 3% disagreed.

Interpretation- 80% students strongly agreed, 9% agreed, 8% neither agreed nor disagreed and 3% disagreed that teachers are instrumental in personality development of the students.



JEEVAN VIKAS MAHAVIDYALYA, DEVGRAM

Tah. Narkhed, Dist. Nagpur-441301 (M.S.)

(Permanent Affiliated to Rashtrasant Tukadoji Maharaj Nagpur University, Nagpur)

College Code: 341

(NAAC Accredited in Cycle II with 'B++' Grade, CGPA 2.93)

ISO 9001:2015 Certified, NIRF Participated

Website: www.jvmd.co.in

E-mail: jvmthugaondeo@gmail.com

Academic Session – 2022-23

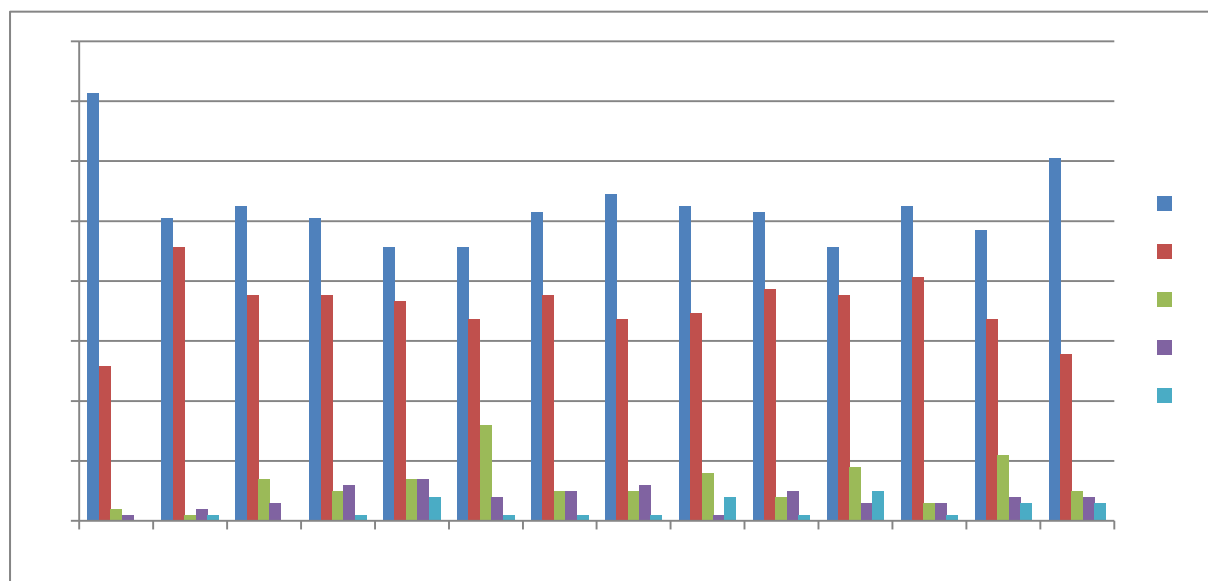
Feedback from students on Teaching Learning and Evaluation

Master of Arts

Feedback Analysis

Learners have given their Responses on a 5 -point Likert Scale for-

Option A- Strongly agree-	2.616
Option B- Agree-	1.789
Option C- Neither agree nor disagree -	0.311
Option D- Disagree-	0.190
Option E- Strongly disagree-	0.091



On X-axis – Question number

On Y-axis- Response in %

- A- Strongly agree
- B- Agree
- C- Neither agree nor disagree
- D- Disagree
- E- Strongly disagree

For question 1 – 71% students strongly agreed, 26% agreed, 1% neither agreed nor disagreed and 26% disagreed.

Interpretation- 71% students strongly agreed, 26% agreed, 1% neither agreed nor disagreed and 26% disagreed that they understand the depth of the course.

For question 2- 50% students strongly agreed, 45% agreed, 1% neither agreed nor disagreed, 2% disagreed and 1% strongly disagreed.

Interpretation- 50% students strongly agreed, 45% agreed, 1% neither agreed nor disagreed, 2% disagreed and 1% strongly disagreed that extent of coverage of course taught by teacher.

For question 3- 52% students strongly agreed, 38% agreed, 7% neither agreed nor disagreed and 3% disagreed.

Interpretation- 52% students strongly agreed, 38% agreed, 7% neither agreed nor disagreed and 3% disagreed that the ability of the teacher to relate the topic with current situation.

For question 4- 50% students strongly agreed, 38% agreed, 5% neither agreed nor disagreed, 6% disagreed and 1% strongly disagreed.

Interpretation- 50% students strongly agreed, 38% agreed, 5% neither agreed nor disagreed, 6% disagreed and 1% strongly disagreed that the entire syllabus is completed in the stipulated time frame.

For question 5- 45% students strongly agreed, 37% agreed, 7% neither agreed nor disagreed, 7% disagreed and 4% strongly disagreed.

Interpretation- 45% students strongly agreed, 37% agreed, 7% neither agreed nor disagreed, 7% disagreed and 4% strongly disagreed that teachers are punctual and regular in taking tutorial classes.

For question 6- 45% students strongly agreed, 34% agreed, 16% neither agreed nor disagreed, 4% disagreed and 1% strongly disagreed.

Interpretation- 45% students strongly agreed, 34% agreed, 16% neither agreed nor disagreed, 4% disagreed and 1% strongly disagreed that the ICT in the form of web sources, power point presentations are a regular feature of the classroom.

For question 7- 51% students strongly agreed, 38% agreed, 5% neither agreed nor disagreed, 5% disagreed and 1% strongly disagreed.

Interpretation- 51% students strongly agreed, 38% agreed, 5% neither agreed nor disagreed, 5% disagreed and 1% strongly disagreed that explanation of textual reading material with clarity and relevance.

For question 8- 54% students strongly agreed, 34% agreed, 5% neither agreed nor disagreed, 6% disagreed and 1% strongly disagreed.

Interpretation- 54% students strongly agreed, 34% agreed, 5% neither agreed nor disagreed, 6% disagreed and 1% strongly disagreed that information regarding additional reading sources is given.

For question 9- 52% students strongly agreed, 35% agreed, 8% neither agreed nor disagreed, 1% disagreed and 4% strongly disagreed.

Interpretation- 52% students strongly agreed, 35% agreed, 8% neither agreed nor disagreed, 1% disagreed and 4% strongly disagreed that values are taught from the prescribed syllabus in terms of knowledge, concepts, manual skills, analytical abilities and broadening perspectives.

For question 10- 51% students strongly agreed, 39% agreed, 4% neither agreed nor disagreed, 5% disagreed and 1% strongly disagreed.

Interpretation- 51% students strongly agreed, 39% agreed, 4% neither agreed nor disagreed, 5% disagreed and 1% strongly disagreed that periodical assessments are conducted as per the given schedule.

For question 11- 45% students strongly agreed, 38% agreed, 9% neither agreed nor disagreed, 3% disagreed and 5% strongly disagreed.

Interpretation- 45% students strongly agreed, 38% agreed, 9% neither agreed nor disagreed, 3% disagreed and 5% strongly disagreed that evaluation is fair and unbiased.

For question 12- 52% students strongly agreed, 41% agreed, 3% neither agreed nor disagreed, 3% disagreed and 1% strongly disagreed.

Interpretation- 52% students strongly agreed, 41% agreed, 3% neither agreed nor disagreed, 3% disagreed and 1% strongly disagreed that regular and timely feedback is given for further improvement.

For question 13- 48% students strongly agreed, 34% agreed, 11% neither agreed nor disagreed, 4% disagreed and 3% strongly disagreed.

Interpretation- 48% students strongly agreed, 34% agreed, 11% neither agreed nor disagreed, 4% disagreed and 3% strongly disagreed that teachers are accessible even after lectures.


For question 14- 60% students strongly agreed, 28% agreed and 5% neither agreed nor disagreed, 4% disagreed and 3% strongly disagreed.

Interpretation- 60% students strongly agreed, 28% agreed and 5% neither agreed nor disagreed, 4% disagreed and 3% strongly disagreed that teachers are instrumental in personality development of the students.

Prepared and submitted by –
Dr. R. G. Shrirame, Coordinator,
Feedback Committee (JVMD)


Convener
Internal Quality Assurance
Cell (IQAC), JVM Thugaondeo
Dist. Nagpur (M.S.)




Principal
Jeevan Vikas Mahavidyalaya
Devgram (Thugaondeo)
Tal. Narkhed, Dist. Nagpur



JEEVAN VIKAS MAHAVIDYALYA, DEVGRAM

(NAAC Accredited in Cycle II with 'B++' Grade, CGPA 2.93)

Internal Quality Assurance Mechanism aims at Continuous Improvement for Academic Excellence and Results
Session – 2022-2023

Feedback of students for Teachers

Name of the Teacher: _____

Name of the student: _____

Semester: _____ Department: _____

Kindly rate the performance on the following attributes on five point scale

A (5.0)	B (4.0)	C (3.0)	D (2.0)	E (1.0)
Strongly Agree पूर्णपणे सहमत	Agree सहमत	Neither Agree – Nor Disagree ना सहमत - ना असहमत	Disagree असहमत	Strongly Disagree पूर्णपणे असहमत

S. No.	Attributes	Marks				
		A	B	C	D	E
1	Understanding the depth of the course content including project work if any विषयाबाबत शिक्षकाचे आकलन (असल्यास प्रकल्प कार्यासह)					
2	Extent of coverage of course taught by the teacher शिकवल्या जाणाऱ्या विषयाचे शिक्षकाकडून केले जाणारे विस्तारीकरण					
3	Ability of the teacher to relate the topic with current situations पाठ्यक्रमाची वर्तमानातील परिस्थितीशी सांगड घालण्याची शिक्षकाची क्षमता					
4	The entire syllabus is completed in the stipulated time frame पाठ्यक्रम ठराविक कालावधीत पूर्ण केला जातो					
5	Teacher are punctual and regular in taking lectures and tutorial classes including practical if any वर्ग आणि प्रशिक्षण वर्ग नियमित व वक्तशीर घेण्यासंदर्भात शिक्षकाची प्रामाणिकता (असल्यास प्रात्यक्षिकासह)					
6	ICT in the form of web sources, power point presentations are a regular feature of the classroom teaching माहिती संप्रेषण तंत्रज्ञानाच्या अंतर्गत वेब सोर्सिस पावर पॉइंट प्रेझेंटेशनचा वापर वर्गामध्ये नियमित केला जातो.					
7	Explanation of textual reading material with clarity and relevance शिकविताना पाठ्यक्रमावर आधारित क्रमिक पुस्तकांचे स्पष्टपणे व प्रासंगिकतेनुसार स्पष्टीकरण दिले जाते					
8	Information regarding additional reading sources is given पाठ्यक्रमावर आधारित क्रमिक पुस्तकां व्यतिरिक्त अभ्यासाच्या इतर स्रोतांची माहिती दिली जाते					

9	Values are taught from the prescribed syllabus in terms of knowledge, concepts, manual skills, analytical abilities and broadening perspectives. नियोजित अभ्यासक्रमातून ज्ञान संकल्पना मानवी कौशल्य विश्लेषणात्मक योग्यता आणि व्यापक दृष्टिकोन यासंदर्भात मूल्ये शिकवली रुजवली जातात					
10	Periodical assessment are conducted as per the given schedule नियोजित वेळापत्रकानुसार मुल्यांकन केले जाते.					
11	Evaluation is fair and unbiased मुल्यांकन योग्य व निरपेक्षपणे केले जाते					
12	Regular and timely feedback is given for further improvement भविष्यात करावयाच्या सुधारणांसाठी नियमित व वेळेवर अभिप्राय दिले जातात					
13	Teachers are accessible even after lectures : वर्ग अध्यापनानंतरही शिक्षक सहज उपलब्ध असतात					
14	Teachers are instrumental in personality development of the students विद्यार्थ्यांच्या व्यक्तिमत्व विकासाच्या दृष्टीने शिक्षक सतत प्रयत्नशील असतात					
15	Suggestions if any असल्यास सूचना					

Signature



JEEVAN VIKAS MAHAVIDYALYA, DEVG RAM

Tah. Narkhed, Dist. Nagpur-441301 (M.S.)

(Permanent Affiliated to Rashtrasant Tukadoji Maharaj Nagpur University, Nagpur)

College Code: 341

(NAAC Accredited in Cycle II with 'B++' Grade, CGPA 2.93)

ISO 9001:2015 Certified, NIRF Participated

Website: www.jvmd.co.in

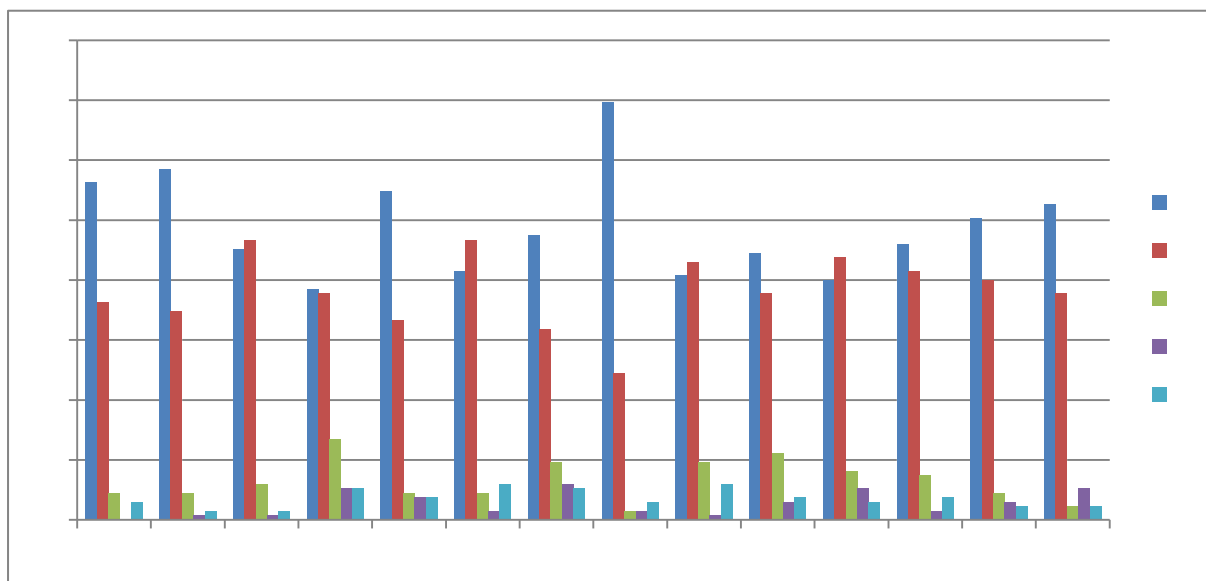
E-mail: jvmthugaondeo@gmail.com

Academic Session – 2022-23 Feedback of Students on College

Feedback Analysis

Learners have given their response on a 5 -point Likert scale for-

Option A- Strongly agree-	2.449
Option B- agree-	1.912
Option C- Neither agree nor disagree -	0.325
Option D- Disagree-	0.134
Option E- Strongly disagree-	0.177



On X-axis – Question number

On Y-axis- Response in %

- A- Strongly agree
- B- Agree
- C- Neither agree nor disagree
- D- Disagree
- E- Strongly disagree

For question 1 – 56% students strongly agreed, 36% agreed, 4% neither agreed nor disagreed and 3% strongly disagreed.

Interpretation- 56% students strongly agreed, 36% agreed, 4% neither agreed nor disagreed and 3% strongly disagreed that the office staff of the college is cooperative and helpful.

For question 2- 58% students strongly agreed, 34% agreed, 4% neither agreed nor disagreed, 1% disagreed and 1% strongly disagreed.

Interpretation- 58% students strongly agreed, 34% agreed, 4% neither agreed nor disagreed, 1% disagreed and 1% strongly disagreed that the library staff is cooperative and helpful.

For question 3- 45% students strongly agreed, 47% agreed, 6% neither agreed nor disagreed, 1% disagreed and 1% strongly disagreed.

Interpretation- 45% students strongly agreed, 47% agreed, 6% neither agreed nor disagreed, 1% disagreed and 1% strongly disagreed that Online educational resources/prescribed books/reading materials are available and accessible in the library.

For question 4- 38% students strongly agreed, 38% agreed, 13% neither agreed nor disagreed, 5% disagreed and 5% strongly disagreed.

Interpretation- 38% students strongly agreed, 38% agreed, 13% neither agreed nor disagreed, 5% disagreed and 5% strongly disagreed that Equipment in the lab(s) is/are in good working condition.

For question 5- 55% students strongly agreed, 33% agreed, 4% neither agreed nor disagreed, 4% disagreed and 4% strongly disagreed.

Interpretation- 55% students strongly agreed, 33% agreed, 4% neither agreed nor disagreed, 4% disagreed and 4% strongly disagreed that Separate common rooms for girls and boys are available.

For question 6- 41% students strongly agreed, 47% agreed, 4% neither agreed nor disagreed, 1% disagreed and 6% strongly disagreed.

Interpretation- 41% students strongly agreed, 47% agreed, 4% neither agreed nor disagreed, 1% disagreed and 6% strongly disagreed that Toilet/washrooms are clean and properly maintained.

For question 7- 47% students strongly agreed, 32% agreed, 10% neither agreed nor disagreed, 6% disagreed and 5% strongly disagreed.

Interpretation- 47% students strongly agreed, 32% agreed, 10% neither agreed nor disagreed, 6% disagreed and 5% strongly disagreed that The classrooms are clean and well maintained.

For question 8- 70% students strongly agreed, 24% agreed, 1% neither agreed nor disagreed, 1% disagreed and 3% strongly disagree

Interpretation- 70% students strongly agreed, 24% agreed, 1% neither agreed nor disagreed, 1% disagreed and 3% strongly disagreed that The campus is green and eco- friendly.

For question 9- 41% students strongly agreed, 43% agreed, 10% neither agreed nor disagreed, 1% disagreed and 6% strongly disagreed.

Interpretation- 41% students strongly agreed, 43% agreed, 10% neither agreed nor disagreed, 1% disagreed and 6% strongly disagreed that Students grievances are redressed/problems are solved well in time.

For question 10- 44% students strongly agreed, 38% agreed, 11% neither agreed nor disagreed, 3% disagreed and 4% strongly disagreed.

Interpretation- 44% students strongly agreed, 38% agreed, 11% neither agreed nor disagreed, 3% disagreed and 4% strongly disagreed that Entrepreneurship Development Cell and placement cell is functional in the college.

For question 11- 40% students strongly agreed, 44% agreed, 8% neither agreed nor disagreed, 5% disagreed and 3% strongly disagreed.

Interpretation- 40% students strongly agreed, 44% agreed, 8% neither agreed nor disagreed, 5% disagreed and 3% strongly disagreed that Authorities ensure strict discipline on and off the campus.

For question 12- 46% students strongly agreed, 41% agreed, 7% neither agreed nor disagreed, 1% disagreed and 4% disagreed.

Interpretation- 46% students strongly agreed, 41% agreed, 7% neither agreed nor disagreed, 1% disagreed and 4% disagreed that Girl students" security is given utmost priority.

For question 13- 50% students strongly agreed, 40% agreed, 4% neither agreed nor disagreed, 3% disagreed and 2% strongly disagreed.

Interpretation- 50% students strongly agreed, 40% agreed, 4% neither agreed nor disagreed, 3% disagreed and 2% strongly disagreed that the institution strives for academic excellence.

For question 14- 53% students strongly agreed, 38% agreed, 2% neither agreed nor disagreed, 5% disagreed and 2% strongly disagreed.

Interpretation- 53% students strongly agreed, 38% agreed, 2% neither agreed nor disagreed, 5% disagreed and 2% strongly disagreed that The institution promotes participation of students in co-curricular, extra-curricular, sports and other events at all levels.

Prepared and submitted by –
Dr. R. G. Shirame, Coordinator,
Feedback Committee (JVMD)


Convener
Internal Quality Assurance
Cell (IQAC), J.V.M. Trusts, Gondoo,
Dist. Nagpur (M.S.)




Principal
Jeevan Vikas Mahavidyalaya
Devgam (T. Huguondoo),
Tal. Narkhed, Dist. Nagpur



JEEVAN VIKAS MAHAVIDYALYA, DEVGRAM

(NAAC Accredited in Cycle II with 'B++' Grade, CGPA 2.93)

Internal Quality Assurance Mechanism aims at Continuous Improvement for Academic Excellence and Results

Session – 2022-2023

Feedback of Students on College

Name of the student: _____

Semester: _____ Department: _____

Kindly rate the performance on the following attributes on five point scale

A (5.0)	B (4.0)	C (3.0)	D (2.0)	E (1.0)
Strongly Agree पूर्णपणे सहमत	Agree सहमत	Neither Agree – Nor Disagree ना सहमत – ना असहमत	Disagree असहमत	Strongly Disagree पूर्णपणे असहमत

S. No.	Attributes	Marks				
		A	B	C	D	E
1	The office staff of the college is cooperative and helpful महाविद्यालयातील कार्यालयीन कर्मचारी वर्ग सहकारी भावनेचे व मदत करणारे आहे					
2	The library staff is cooperative and helpful ग्रंथालयातील कर्मचारी वर्ग सहकारी भावनेचे व मदत करणारे आहेत					
3	Online educational resources/prescribed books/reading materials are available and accessible in the library ग्रंथालयामध्ये ऑनलाइन शैक्षणिक स्रोत क्रमिक पाठ्यपुस्तके संदर्भ ग्रंथ पुस्तके वाचन सामग्री उपलब्ध असून सहज प्राप्त होते					
4	Equipment in the lab(s) is/are in good working condition प्रयोग शाळेत असलेली साधने चांगल्या कार्य स्थितीत आहे					
5	Separate common rooms for girls and boys are available आणि मुलींकरिता स्वतंत्र कॉमन रूम सामूहिक खोल्या महाविद्यालयात उपलब्ध आहेत					
6	Toilet/wash rooms are clean and properly maintained महाविद्यालयातील स्वच्छतागृहे स्वच्छ आणि व्यवस्थित असतात					
7	The class rooms are clean and well maintained वर्ग खोल्या स्वच्छ आणि व्यवस्थित आहे					
8	The campus is green and eco-friendly महाविद्यालयाचा परिसर निसर्गरम्य आणि पर्यावरण पर्यावरण पूरक आहे					
9	Students grievances are redressed/problems are solved well in time विद्यार्थ्यांच्या समस्यांचे प्रश्नांची सोडवणूक वेळेतच केली जाते					



JEEVAN VIKAS MAHAVIDYALYA, DEVGRAM

Tah. Narkhed, Dist. Nagpur-441301 (M.S.)

(Permanent Affiliated to Rashtrasant Tukadoji Maharaj Nagpur University, Nagpur)

College Code: 341

(NAAC Accredited in Cycle II with 'B++' Grade, CGPA 2.93)

ISO 9001:2015 Certified, NIRF Participated

Website: www.jvmd.co.in

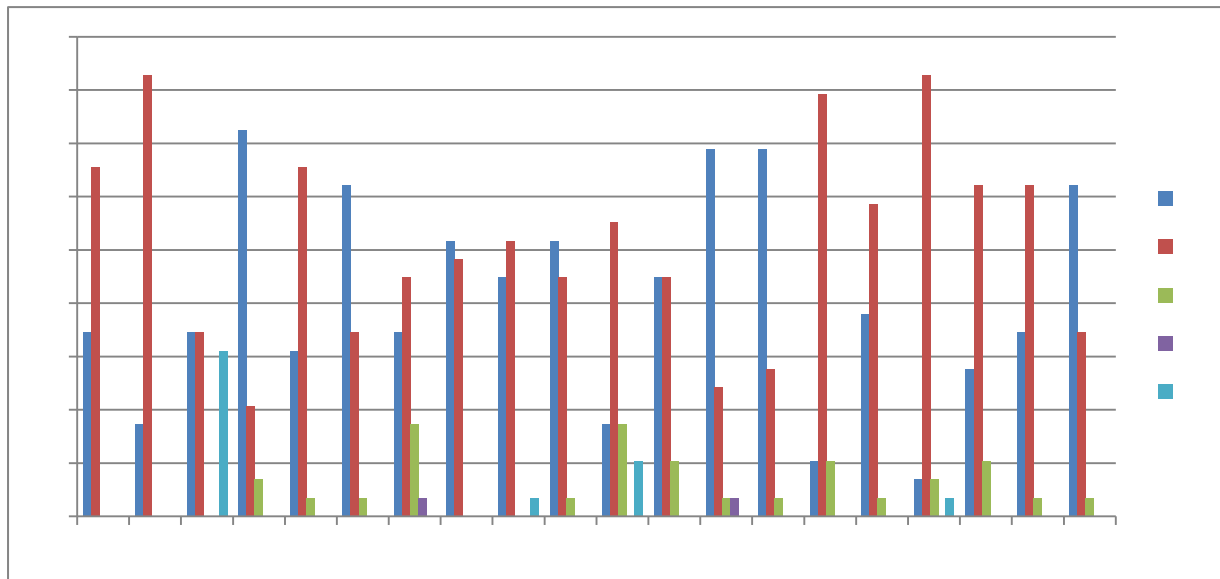
E-mail: jvmthugaondeo@gmail.com

Academic Session – 2022-23 Feedback from Parents on College

Feedback Analysis

Parents have given their response on a 5 -point Likert scale for-

Option A- Strongly agree-	2.21
Option B- agree-	2.41
Option C- Strongly agree-	0.30
Option D- Disagree-	0.04
Option E- Strongly disagree-	0.02



On X-axis – Question number

On Y-axis- Response in %

- A- Strongly agree
- B- Agree
- C- Neither agree nor disagree
- D- Disagree
- E- Strongly disagree

For question 1 - 34% parents strongly agreed and 66% agreed.

Interpretation- 34% parents strongly agreed and 66% agreed that their ward is regular in the college

For question 2 - 17% parents strongly agreed, 83% agreed.

Interpretation- 17% parents strongly agreed, 83% agreed that they make regular enquiries of their ward's progress in study

For question 03 - 35% parents strongly agreed, 34% agreed and 31% strongly disagreed.

Interpretation-35% parents strongly agreed, 34% agreed and 31% strongly disagreed that they get information about their ward's educational progress through the Progress Card and also by visiting the college

For question 04 - 72% parents strongly agreed, about 21% agreed and 7% neither agreed nor disagreed.

Interpretation- 72% parents strongly agreed, about 21% agreed and 7% neither agreed nor disagreed that „Parent-Teacher Association“ functions are conducted in their wards college

For question 05 - 31% parents strongly agreed, about 66% agreed and 3% neither agreed nor disagreed.

Interpretation- 31% parents strongly agreed, about 66% agreed and 3% neither agreed nor disagreed that „The College has contributed to the overall development of their ward“.

For question 06 - 62% parents strongly agreed, about 35% agreed and 3% neither agreed nor disagreed.

Interpretation- 62% parents strongly agreed, about 35% agreed and 3% neither agreed nor disagreed that their ward should participate in extra-curricular activities other than from curricular activities.

For question 07- 34% parents strongly agreed, about 45% agreed, 17% neither agreed nor disagreed and 4% disagreed.

Interpretation- 34% parents strongly agreed, about 45% agreed, 17% neither agreed nor disagreed and 4% disagreed that they are ready to contribute in the development of the college

For question 08 - 52% parents strongly agreed and 48% agreed.

Interpretation- 52% parents strongly agreed and 48% agreed that they are satisfied with the facilities provided by the college

For question 09 - 45% parents strongly agreed, 52% agreed and 3% strongly disagreed.

Interpretation- 45% parents strongly agreed, 52% agreed and 3% strongly disagreed that teacher has pivotal role in the development of parents' educational progress.

For question 10 - 52% parents strongly agreed, 45% agreed and 3% neither agreed nor disagreed.

Interpretation- 52% parents strongly agreed, 45% agreed and 3% neither agreed nor disagreed that significant contribution of the college in the development of bhiwapur.

For question 11 - 17% parents strongly agreed, 55% agreed, 17% neither agreed nor disagreed and 10% strongly disagreed.

Interpretation- 17% parents strongly agreed, 55% agreed, 17% neither agreed nor disagreed and 10% strongly disagreed that they were satisfied with the placement and employment opportunities provided by the college

For question 12 - 45% parents strongly agreed, 45% agreed and 10% neither agreed nor disagreed.

Interpretation- 45% parents strongly agreed, 45% agreed and 10% neither agreed nor disagreed that they are satisfied with the functioning of Competitive exam. Preparation cell (UPSC/MPSC)

For question 13 - 69% parents strongly agreed, 24% agreed, 3% neither agreed nor disagreed and 3% disagreed.

Interpretation- 69% parents strongly agreed, 24% agreed, 3% neither agreed nor disagreed and 3% disagreed that they were satisfied with the safety and security of their ward in the college

For question 14 - 69% parents strongly agreed, 27% agreed and 3% neither agreed nor disagreed.

Interpretation- 69% parents strongly agreed, 27% agreed and 3% neither agreed nor disagreed that they were satisfied with the cleanliness and natural environment in the college campus

For question 15 - 10% parents strongly agreed, 79% agreed and 10% neither agreed nor disagreed.

Interpretation- 10% parents strongly agreed, 79% agreed and 10% neither agreed nor disagreed that they were satisfied with the functioning of “Parents” Consumer Society” in the college

For question 16 - 38% parents strongly agreed, 59% agreed and 3% neither agreed nor disagreed.

Interpretation- 38% parents strongly agreed, 59% agreed and 3% neither agreed nor disagreed that their level of satisfaction with the quality of education being imparted by the college.

For question 17 - 7% parents strongly agreed, 83% agreed, 7% neither agreed nor disagreed and 3% strongly disagreed.

Interpretation- 7% parents strongly agreed, 83% agreed, 7% neither agreed nor disagreed and 3% strongly disagreed that the administration of the college strives for

the wellbeing of wards and their parents in terms of imparting quality education.

For question 18 - 28% parents strongly agreed, 62% agreed and 10% neither agreed nor disagreed.

Interpretation- 28% parents strongly agreed, 62% agreed and 10% neither agreed nor disagreed that they were satisfied with the performance of non-teaching staff of the college

For question 19 - 34% parents strongly agreed, 62% agreed and 4% neither agreed nor disagreed.

Interpretation- 34% parents strongly agreed, 62% agreed and 4% neither agreed nor disagreed that the management has key role in the progress of college and its parents


For question 20 - 62% parents strongly agreed, 34% agreed and 3% neither agreed nor disagreed.

Interpretation- 62% parents strongly agreed, 34% agreed and 3% neither agreed nor disagreed that they were satisfied with the free and paid consultancy services in the college.

Compiled and submitted by –
Dr. R. G. Shrirame, Coordinator,
Feedback Committee (JVMD)


Convener
Internal Quality Assurance
Cell (IQAC), JVM Thugaondeo
Dist. Nagpur (M.S.)




Principal
Jeevan Vikas Mahavidyalaya
Devgram (Thugaondeo)
Tah. Narkhed, Dist. Nagpur



JEEVAN VIKAS MAHAVIDYALYA, DEVGRAM

(NAAC Accredited in Cycle II with 'B++' Grade, CGPA 2.93)

Internal Quality Assurance Mechanism aims at Continuous Improvement for Academic Excellence and Results

Session – 2022-2023

Feedback of Parents on College

Name: _____

Profession: _____

Kindly rate the performance on the following attributes on four point scale.

A (5.0)	B (4.0)	C (3.0)	D (2.0)	E (1.0)
Strongly Agree पूर्णपणे सहमत	Agree सहमत	Neither Agree – Nor Disagree ना सहमत – ना असहमत	Disagree असहमत	Strongly Disagree पूर्णपणे असहमत

Sr. No	Attributes	Marks				
		A	B	C	E	D
01	Your ward is regular in the college तुमचा पाल्य महाविद्यालयात नियमित जातो					
02	You make regular enquiries of your wards progress in study आपण आपल्या पाल्याच्या अभ्यासाची चौकशी करता					
03	You get information about your ward's educational progress through the Progress Card and also by visiting the college आपल्या पाल्याच्या शैक्षणिक प्रगतीची माहिती प्रगती पुस्तकावरून व महाविद्यालयात जाऊन घेता					
04	Parent-Teacher Association functions in your ward's college तुमचा पाल्य ज्या महाविद्यालयात अध्ययन करतो तेथे पालक शिक्षक संघ कार्यप्रवण आहे					
05	The college has contributed to the overall development of your ward. तुमच्या पाल्याच्या सर्वांगीण विकासात महाविद्यालयाचे योगदान आहे असे वाटते					
06	Your wards should participate in extra-curricular activities other than from curricular activities तुमचा पाल्य अभ्यासाव्यतिरिक्त इतर शैक्षणिक उपक्रमांमध्ये सहभागी व्हायला पाहिजे					

07	You are ready to contribute in the development of the college महाविद्यालयाच्या विकासात आपण सहकार्य करायला तयार आहात					
08	You are satisfied with the facilities provided by the college महाविद्यालयाच्या सोयी सवलती व उपक्रमांविषयी आपण समाधानी आहात					
09	Teacher has pivotal role in the development of students educational progress विद्यार्थ्यांच्या शैक्षणिक विकासात शिक्षकांची भूमिका महत्त्वपूर्ण आहे.					
10	Significant contribution of the college in the development of Devgram देवग्राम च्या व जवळील परिसराच्या विकासात महाविद्यालयाचे योगदान महत्त्वपूर्ण आहे.					
11	Satisfied with the Placement and employment opportunities provided by the college महाविद्यालयाच्या माध्यमातून तुमच्या पाल्याला पुरविण्यात येणाऱ्या रोजगाराच्या संधी बाबत आपण समाधानी आहात					
12	You are satisfied with the functioning of Competitive exam. preparation cell(UPSC/MPSC) स्पर्धा परीक्षा मार्गदर्शन केंद्राच्या सुविधेबाबत सुविधेबाबत आपण समाधानी आहात					
13	Satisfied with the safety and security of your ward in the college महाविद्यालयातर्फे तुमच्या पाल्याची घेण्यात येणाऱ्या सुरक्षा व संरक्षणाबाबत आपण समाधानी आहात					
14	The extent to which you are satisfied with the cleanliness and natural environment in the college campus महाविद्यालयातील स्वच्छता व नैसर्गिक पर्यावरणाबाबत आपण समाधानी आहात					
15	Satisfied with the functioning of Students Consumer Society in the college महाविद्यालयातील विद्यार्थी ग्राहक भंडाराच्या सुविधेबाबत आपण समाधानी आहात					
16	Your level of satisfaction with the quality of education being imparted by the college आपल्या पाल्याला महाविद्यालयात शिक्षकांकडून दिल्या जाणाऱ्या शिक्षणाच्या दर्जाबाबत आपण समाधानी आहात					
17	The administration of the college strives for the well Being of wards and their parents in terms of imparting quality education. महाविद्यालयातील प्रशासकीय व्यवस्था विद्यार्थी व पालकांच्या गुणात्मक शिक्षणाच्या दृष्टीने हितावह आहे					
18	Satisfied with the performance of non-teaching staff of the college. शिक्षक इतर कर्मचाऱ्यांच्या शिक्षकेतर कर्मचाऱ्यांच्या कामकाजाविषयी आपण समाधानी आहात					



JEEVAN VIKAS MAHAVIDYALYA, DEVGRAM

(NAAC Accredited in Cycle II with 'B++' Grade, CGPA 2.93)

Internal Quality Assurance Mechanism aims at Continuous Improvement for Academic Excellence and Results

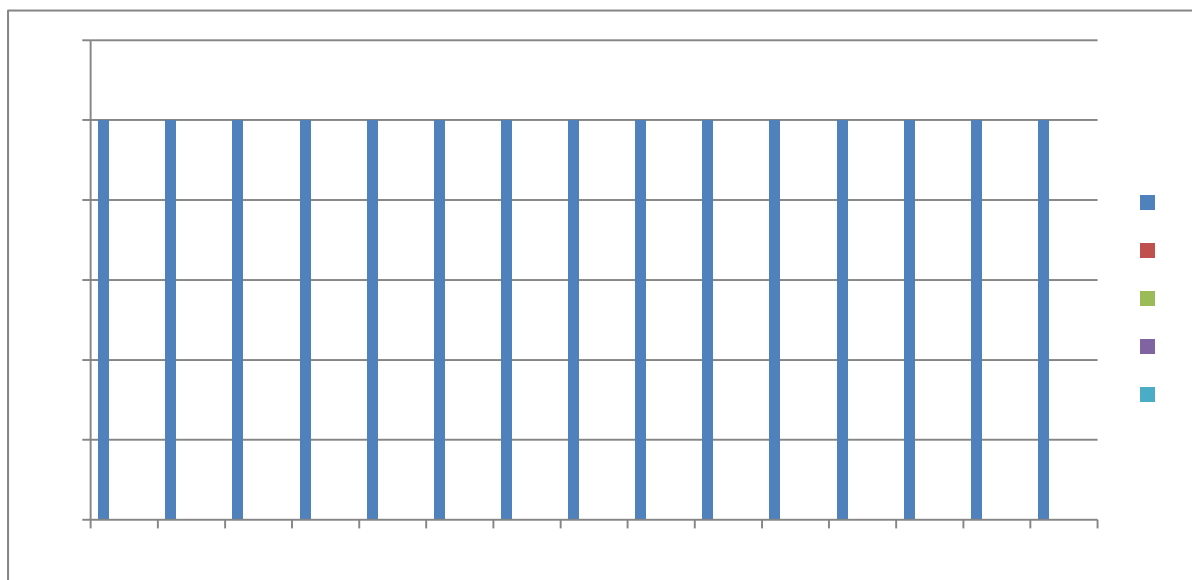
Academic Session – 2022-23

Feedback of Teachers on College

Feedback Analysis

Teachers have given their response on a 5 -point Likert scale for-

Option A- Strongly agree-	5.00
Option B- Agree-	0.00
Option C- Neither agree nor disagree-	0.00
Option D- Disagree-	0.00
Option E- Strongly disagree-	0.00



On X-axis – Question number

On Y-axis- Response in %

- A- Strongly agree
- B- Agree
- C- Neither agree nor disagree
- D- Disagree
- E- Strongly disagree

For question 1 – 100% teaching staff strongly agreed.

Interpretation- 100% teaching staff strongly agreed that syllabus is suitable to the course.

For question 2 - 100% teaching staff strongly agreed.

Interpretation- 100% teaching staff strongly agreed that aims and objectives of the syllabi are well defined and clear to teachers and students.

For question 3 - 100% teaching staff strongly agreed.

Interpretation- 100% teaching staff strongly agreed that course content is followed by corresponding reference materials.

For question 4 - 100% teaching staff strongly agreed.

Interpretation- 100% teaching staff strongly agreed that sufficient numbers of prescribed books are available in the library

For question 5 - 100% teaching staff strongly agreed.

Interpretation- 100% teaching staff strongly agreed that the course/syllabus has good balance between theory and Application

For question 6 - 100% teaching staff strongly agreed.

Interpretation- 100% teaching staff strongly agreed that the books prescribed/listed as reference materials are relevant, easily available in the library.

For question 7 - 100% teaching staff strongly agreed.

Interpretation- 100% teaching staff strongly agreed that infrastructural facilities, such as teacher's rooms, class rooms, reading rooms and toilets are available in the Institution

For question 8 - 100% teaching staff strongly agreed.

Interpretation- 100% teaching staff strongly agreed that separate facility is available for the faculty in the canteen.

For question 9 - 100% teaching staff strongly agreed.

Interpretation- 100% teaching staff strongly agreed that tests and examinations are conducted well in time with proper coverage of all units in the syllabus.

For question 10 - 100% teaching staff strongly agreed.

Interpretation- 100% teaching staff strongly agreed that I have the freedom to adopt new techniques/strategies of teaching such as seminar presentations, group discussions and learners' participations.

For question 11 - 100% teaching staff strongly agreed.

Interpretation- 100% teaching staff strongly agreed that I have the freedom to adopt/adapt new techniques/strategies of testing and assessment of students

For question 12 - 100% teaching staff strongly agreed.

Interpretation- 100% teaching staff strongly agreed that the environment in the institution is conducive for teaching and research.

For question 13 - 100% teaching staff strongly agreed.

Interpretation- 100% teaching staff strongly agreed that the administration is teacher friendly.

For question 14 - 100% teaching staff strongly agreed.

Interpretation- 100% teaching staff strongly agreed that the institution provides adequate and smooth support for projects and research facilities.

For question 15 - 100% teaching staff strongly agreed.


Interpretation- 100% teaching staff strongly agreed that provisions for professional development are non-discriminatory and fair

Compiled and submitted by –

Dr. R. G. Shirame,
Coordinator, Feedback
Committee JVMD


Convener
Internal Quality Assurance
Cell (IQAC), JVM Thugzondeo
Dist. Nagpur (M.S.)




Principal
Jeevan Vikas Mahavidyalaya
Devgram (Thugzondeo)
Tah. Narkhed, Dist. Nagpur



JEEVAN VIKAS MAHAVIDYALYA, DEVGRAM

(NAAC Accredited in Cycle II with 'B++' Grade, CGPA 2.93)

Internal Quality Assurance Mechanism aims at Continuous Improvement for Academic Excellence and Results

Academic Session – 2022 -2023

Feedback of Teacher on College

Name: _____

Department: _____

Kindly rate the performance on the following attributes on five point scale

Strongly agree- 5.00	Agree- 4.00	Neither agree nor disagree- 3.00	Disagree- 2.00	Strongly disagree- 1.0
A	B	C	D	E

Sr. No	Attributes	Marks				
		A	B	C	D	E
1	Syllabus is suitable to the course.					
2	Aims and objectives of the syllabi are well defined and clear to teachers and students.					
3	Course content is followed by corresponding reference materials.					
4	Sufficient numbers of prescribed books are available in the Library					
5	The course/syllabus has good balance between theory and Application					
6	The books prescribed/listed as reference materials are relevant, easily available in the Library.					
7	Infrastructural facilities, such as teacher's rooms, class rooms, reading rooms and toilets are available in the Institution					
8	Separate facility is available for the faculty in the canteen.					

9	Tests and examinations are conducted well in time with proper coverage of all units in the syllabus.					
10	I have the freedom to adopt new techniques/strategies of teaching such as seminar presentations, group discussions and learners' participations.					
11	I have the freedom to adopt/adapt new techniques/strategies of testing and assessment of students					
12	The environment in the institution is conducive for teaching and research.					
13	The administration is teacher friendly.					
14	The Institution provides adequate and smooth support for projects and research facilities.					
15	Provisions for professional development are non-discriminatory and fair					
16	Suggestions for future improvements :					
	Signature					



JEEVAN VIKAS MAHAVIDYALYA, DEVGRAM

(NAAC Accredited in Cycle II with 'B++' Grade, CGPA 2.93)

Internal Quality Assurance Mechanism aims at Continuous Improvement for Academic Excellence and Results

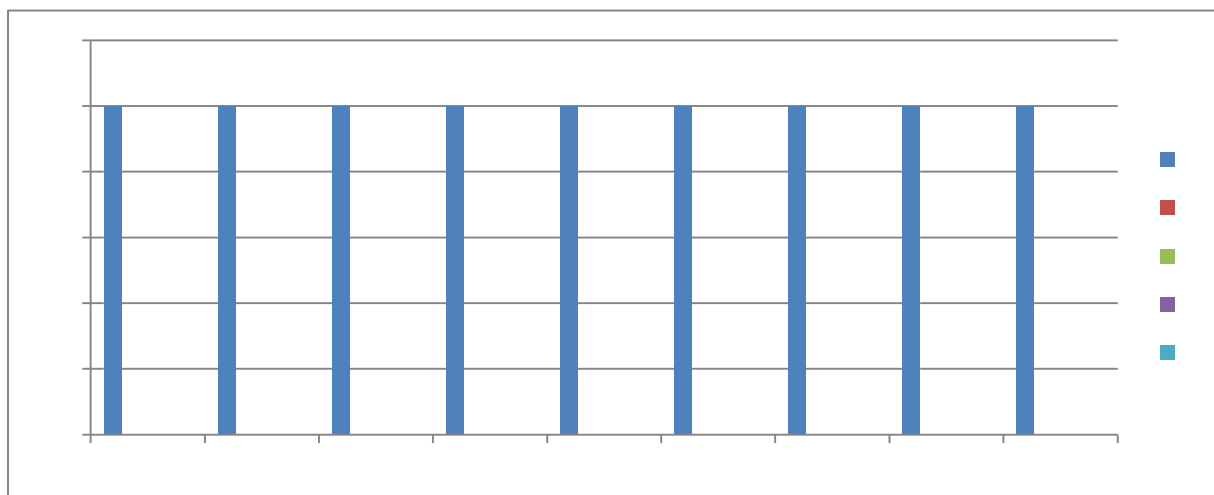
Academic Session–2022-2023

Feedback Non-Teaching Staff on College

Feedback Analysis

Non-Teaching Staff have given their response on a 5 -point Likert scale for-

Option A- Strongly agree-	5.00
Option B- Agree-	0.00
Option C- Neither agree nor disagree -	0.00
Option D- Disagree-	0.00
Option E- Strongly disagree-	0.00



On X-axis – Question number

On Y-axis- Response in %

- A- Strongly agree
- B- Agree
- C- Neither agree nor disagree
- D- Disagree
- E- Strongly disagree

For question 1 - 100% non-teaching staff strongly agreed.

Interpretation- All non-teaching staff strongly agreed that modern technology is used in the day-to day functioning of the college.

For question 2 - 100% non-teaching staff strongly agreed.

Interpretation- All non-teaching staff strongly agreed that ICT is made mandatory for all the employees of the college.

For question 3 - 100% Non-Teaching Staff strongly agreed.

Interpretation- All non-teaching staff strongly agreed that workshops and training sessions are organized to increase the efficiency of non –teaching staff.

For question 4 - 100% non-teaching staff strongly agreed.

Interpretation- All non-teaching staff strongly agreed that they are aware of their accountability towards work.

For question 5 - 100% non-teaching staff strongly agreed.

Interpretation- All Non-Teaching Staff strongly agreed that they are ready to help students during their academic sojourn

For question 6 - 100% non-teaching staff strongly agreed.

Interpretation- All non-teaching staff strongly agreed that their work is done without any partiality or discrimination towards others

For question 7 - 100% non-teaching staff strongly agreed.

Interpretation- All non-teaching staff strongly agreed that they are aware of their Sense of responsibility for college

For question 8 - 100% non-teaching staff strongly agreed.

Interpretation- All non-teaching staff strongly agreed that they are satisfied with the work culture of the principal and the environment of the college.

For question 9 - 100% non-teaching staff strongly agreed.

Interpretation- All non-teaching staff strongly agreed that they ensure active participation in all activities of the college.

Compiled and submitted by –
Dr. R. G. Shrirame, Coordinator,
Feedback Committee, JVMd


Coordinator
Internal Quality Assurance
Cell (IQAC), JVM Thugondeo
Dist. Nagpur (M.S.)




Principal
Jeevan Nikas Mahavidyalaya
Beygram (Thugondeo)
Tal. Narkhed, Dist. Nagpur



JEEVAN VIKAS MAHAVIDYALYA, DEVGRAM

(NAAC Accredited in Cycle II with 'B++' Grade, CGPA 2.93)

Feedback Non-Teaching Staff on College

Internal Quality Assurance Mechanism aims at Continuous Improvement for Academic Excellence and Results
Session-2022-2023

Name: _____

Kindly rate the performance on the following attributes the five point scale

Strongly agree- 5.00	Agree- 4.00	Neither agree nor disagree- 3.00	Disagree- 2.00	Strongly disagree- 1.0
A	B	C	D	E

Sr. No	Attributes	Marks				
		A	B	C	D	E
01	Modern Technology is used in the day-today functioning of the college. महाविद्यालयाच्या आजच्या कामकाजात आधुनिक तंत्रज्ञानाचा वापर केला जातो.					
02	ICT is made mandatory for all the employees of the college. महाविद्यालयातील सर्व कर्मचाऱ्यांना ICT अनिवार्य करण्यात आले आहे.					
03	Workshops and Training Sessions are organized to increase the efficiency of non-teaching Staff. शिक्षकेतर कर्मचाऱ्यांची कार्यक्षमता वाढवण्यासाठी कार्यशाळा आणि प्रशिक्षण सत्रे आयोजित केली जातात.					
04	Aware of our accountability towards work. आपल्या कामाच्या जबाबदारीची जाणीव आहे.					
05	Ready to help students during their academic sojourn. विद्यार्थ्यांना त्यांच्या शैक्षणिक प्रवासादरम्यान मदत करण्यास तयार असणे.					

06	Work is done without any partiality or discrimination towards others इतरांबद्दल कोणताही पक्षपात किंवा भेदभाव न करता काम केले जाते					
07	Sense of responsibility for college कॉलेजच्या जबाबदारीची जाणीव					
08	Satisfied with the work culture and the environment of the college. कॉलेजचे वातावरण आणि कार्यसंस्कृती पाहून समाधानी.					
09	Ensure active participation in all activities of the College कॉलेजच्या सर्व उपक्रमांमध्ये सक्रिय सहभाग सुनिश्चित करणे					
10	Suggestions for development in the future. भविष्यात विकासासाठी सूचना.					
		Signature				



JEEVAN VIKAS MAHAVIDYALYA, DEVGRAM

(NAAC Accredited in Cycle II with 'B++' Grade, CGPA 2.93)

Internal Quality Assurance Mechanism aims at Continuous Improvement for Academic Excellence and Results

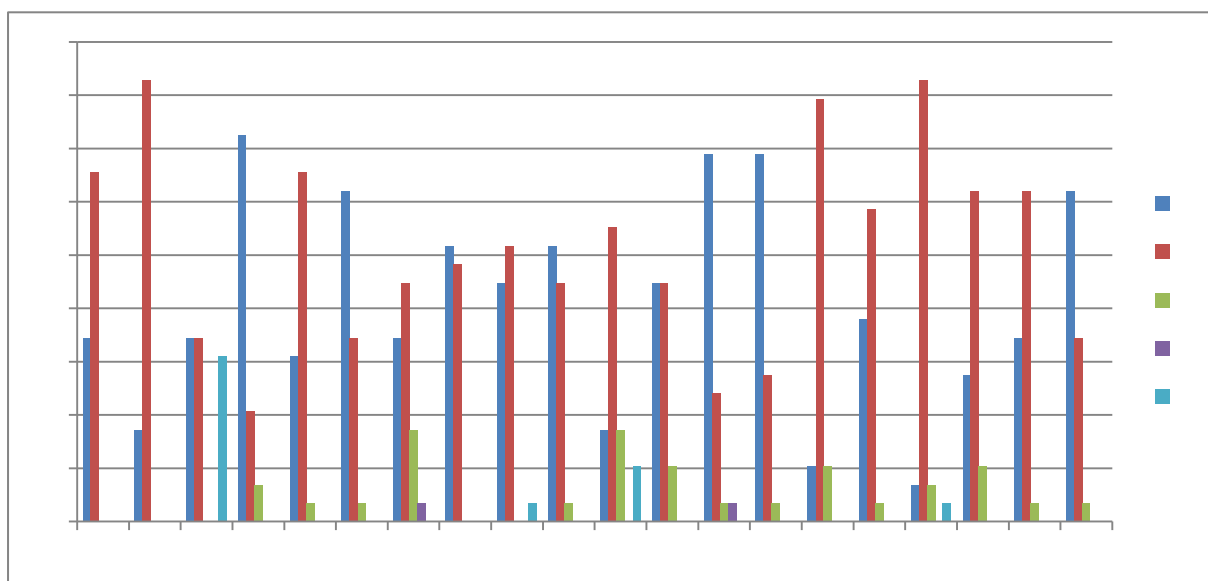
Academic Session – 2022-23

Feedback of Alumni on College

Feedback Analysis

Alumni have given their response on a 5 -point Likert scale for-

Option A- Strongly agree-	2.22
Option B- agree-	2.41
Option C- Neither agree nor disagree -	0.30
Option D- Disagree-	0.04
Option E- Strongly disagree-	0.02



On X-axis – Question number

On Y-axis- Response in %

- A- Strongly agree
- B- Agree
- C- Neither agree nor disagree
- D- Disagree
- E- Strongly disagree

For question 1 - 34% alumni strongly agreed and 66% agreed.

Interpretation- 34% alumni strongly agreed and 66% agreed that the college is keeping up with the changing times.

For question 2 - 17% alumni strongly agreed and 83% agreed.

Interpretation- 17% alumni strongly agreed and 83% agreed that the college is empowered to help students achieve their goals.

For question 3 - 35% alumni strongly agreed, 34% agreed and 31% strongly disagreed.

Interpretation- 35% alumni strongly agreed, 34% agreed and 31% strongly disagreed that students are acquainted with the information and communication technologies used in the classrooms.

For question 04 - 72% alumni strongly agreed, 21% agreed and 7% neither agreed nor disagreed.

Interpretation- 72% alumni strongly agreed, 21% agreed and 7% neither agreed nor disagreed that the administration of the college is vibrant in nature.

For question 05 - 31% alumni strongly agreed, 66% agreed and 3% neither agreed nor disagreed.

Interpretation- 31% alumni strongly agreed, 66% agreed and 3% neither agreed nor disagreed that the college is equipped with sufficient number of computers.

For question 06 - 62% alumni strongly agreed, 35% agreed and 3% neither agreed nor disagreed.

Interpretation- 62% alumni strongly agreed, 35% agreed and 3% neither agreed nor disagreed that college library is updated from time to time.

For question 07- 34% alumni strongly agreed, 45% agreed, 17% neither agreed nor disagreed and 3% disagreed.

Interpretation- 34% alumni strongly agreed, 45% agreed, 17% neither agreed nor disagreed and 3% disagreed that college has long term policies for the bright future of the students.

For question 08 - 52% alumni strongly agreed and 48% agreed.

Interpretation- 52% alumni strongly agreed and 48% agreed that satisfied with the sports and other facilities available in the college.

For question 09 - 45% alumni strongly agreed, 52% agreed and 3% strongly disagreed.

Interpretation- 45% alumni strongly agreed, 52% agreed and 3% strongly disagreed that they see the enhancement in the quality of teachers over a period of time.

For question 10 - 52% alumni strongly agreed, 45% agreed and 3% neither agreed nor disagreed.

Interpretation- 52% alumni strongly agreed, 45% agreed and 3% neither agreed nor disagreed that visible and marked benefits in students' personalities from the enhanced quality of teachers.

For question 11 - 17% alumni strongly agreed, 55% agreed, 18% neither agreed nor disagreed and 10% strongly disagreed.

Interpretation- 17% alumni strongly agreed, 55% agreed, 18% neither agreed nor disagreed and 10% strongly disagreed that college actively involves in community development programmes.

For question 12 - 45% alumni strongly agreed, 45% agreed and 10% neither agreed nor disagreed.

Interpretation- 45% alumni strongly agreed, 45% agreed and 10% neither agreed nor disagreed that Timely aid is provided to the needy and poor students.

For question 13 - 69% alumni strongly agreed, 24% agreed, 4% neither agreed nor disagreed and 3% disagreed.

Interpretation- 69% alumni strongly agreed, 24% agreed, 4% neither agreed nor disagreed and 3% disagreed that their contribution in the development of the college is ensured.

For question 14 - 69% alumni strongly agreed, 28% agreed and 3% neither agreed nor disagreed.

Interpretation- 69% alumni strongly agreed, 28% agreed and 3% neither agreed nor disagreed that alumni are motivated by valuing their efforts through periodic motivation in the form of prizes.

For question 15 - 10% alumni strongly agreed, 79% agreed and 10% neither agreed nor disagreed.

Interpretation- 10% alumni strongly agreed, 79% agreed and 10% neither agreed nor disagreed that alumni are trained to participate in the cultural programmes (Dance, Drama etc.).

For question 16 - 38% alumni strongly agreed, 59% agreed and 3% neither agreed nor disagreed.

Interpretation- 38% alumni strongly agreed, 59% agreed and 3% neither agreed nor disagreed that that they are satisfied with the facilities made available in the competitive guidance centre.

For question 17 - 7% alumni strongly agreed, 83% agreed, 7% neither agreed nor disagreed and 3% strongly disagreed.

Interpretation- 7% alumni strongly agreed, 83% agreed, 7% neither agreed nor disagreed and 3% strongly disagreed that they are satisfied with the employment opportunities made available in the college for the students.

For question 18 - 28% alumni strongly agreed, 62% agreed and 10% neither agreed nor disagreed.

Interpretation- 28% alumni strongly agreed, 62% agreed and 10% neither agreed nor disagreed that they are satisfied with the free and paid consultancy services offered in the college.

For question 19 - 35% alumni strongly agreed, 62% agreed and 4% neither agreed nor disagreed.

Interpretation- 34% alumni strongly agreed, 62% agreed and 4% neither agreed nor disagreed that they are satisfied with the social activities taken up by the college.

For question 20 - 62% alumni strongly agreed, 34% agreed and 4% neither agreed nor disagreed.

Interpretation- 62% alumni strongly agreed, 34% agreed and 4% neither agreed nor disagreed that full contribution for the overall development of the college is ensured.

Compiled and submitted by –
Dr. R. G. Shrirame, Coordinator,
Feedback Committee, JVMD


Coordinator
Internal Quality Assurance
Cell (IQAC), J.V.M. Thuganodeo
Dist. Nagpur (M.S.)




Principal
Jeevan Vikas Mahavidyalaya
Devgam (Thuganodeo),
Tal. Narkhed, Dist. Nagpur



JEEVAN VIKAS MAHAVIDYALYA, DEVGRAM

(NAAC Accredited in Cycle II with 'B++' Grade, CGPA 2.93)

Feedback of Alumni on College

Internal Quality Assurance Mechanism aims at Continuous Improvement for Academic Excellence and Results
Session-2022-2023

Specimen Feedback Form

प्रिय विद्यार्थ्यांनो,

जीवन विकास महाविद्यालय, देवग्राम, जि नागपूर येथून आपण स्नातक, स्नातकोत्तर पदवी पूर्ण केली त्याबद्दल आपले आभार. हा अर्ज आपल्याकडून काही सूचना, नवीन अपेक्षा इ. बदल माहिती मिळण्यासाठी तयार केला आहे. कृपया आपण ते सुचवावे.

Dear Alumunus,

Thanks for considering Jeevan Vikas Mahavidyalaya as a source of your Graduate /PostGraduate. This form has been designed to seek your suggestions or comments about the college.

Name: _____

Profession: _____

E- mail -

Contact no -

Kindly rate the performance on the following attributes on five point scale

A (5.0)	B (4.0)	C (3.0)	D (2.0)	E (1.0)
Strongly Agree पूर्णपणे सहमत	Agree सहमत	Neither Agree – Nor Disagree ना सहमत – ना असहमत	Disagree असहमत	Strongly Disagree पूर्णपणे असहमत

Sr. No	Attributes	Marks				
		A	B	C	D	E
01	The college is keeping up with the changing times. कॉलेज काळानुसार बदलत आहे.					
02	The college is empowered to help students achieve their goals. महाविद्यालय विद्यार्थ्यांचे ध्येय गाठण्यासाठी सक्षम आहे					

03	Students are acquainted with the Information and Communication Technologies used in the Class rooms. विद्यार्थी माहिती संप्रेषणाच्या माहिती संप्रेषण तंत्रज्ञानाच्या माध्यमातून वर्गामध्ये दिल्या जाणाऱ्या शिक्षणाबद्दल परिचित आहे					
04	Administration of the college is vibrant in nature. महाविद्यालयातील प्रशासन व्यवस्था गतिशील आहे					
05	The college is equipped with sufficient number of computers. महाविद्यालय संपूर्ण संग नी संग निकी कृत करण्यात आलेले आहे					
06	College Library is updated from time to time महाविद्यालयाचे ग्रंथालय अध्यायवत आहे					
07	College has long term policies for the bright future Of the students. महाविद्यालय विद्यार्थ्यांच्या उज्वल भवितव्यासाठी काही दीर्घकालीन योजना राबवते					
08	Satisfied with the Sports and other facilities available in the college. महाविद्यालयातील खेळ व उपलब्ध सुविधे विषयी आपण समाधानी आहात					
09	Enhancement in the quality of teachers over a period of time. महाविद्यालयातील शिक्षकांच्या गुणवत्तेमध्ये वाढ झाली आहे					
10	Visible and marked benefits in students' personalities from the enhanced quality of teachers. शिक्षकांच्या गुणवत्ता वाढीचा फायदा विद्यार्थ्यांना होतो आहे					
11	College actively involves in Community Development programmes महाविद्यालय गावातील सामाजिक कार्यामध्ये सहभागी होत असते					
12	Timely aid is provided to the needy and poor students. महाविद्यालय गरजू व गरीब विद्यार्थ्यांना मदत करते					
13	Your contribution in the development of the college is ensured तुम्ही महाविद्यालयाच्या विकासासाठी काही योगदान करता					

14	<p>Students are motivated by valuing their efforts Through periodic motivation in the form of prizes. गुणवत्ताधारक विद्यार्थ्यांना आपण बक्षीसे देऊन प्रोत्साहित करता</p>					
15	<p>Students are trained to participate in the Cultural Programmes (Dance, Drama etc.) महाविद्यालयातील विद्यार्थ्यांकरिता सांस्कृतिक कार्यक्रमांतर्गत पट पथनाट्य नाटक नृत्य यांचे प्रशिक्षण देतात स्पर्धा</p>					
16	<p>Satisfied with the facilities made available in the Competitive Guidance Centre. परीक्षा मार्गदर्शन केंद्राच्या सुविधेबाबत आपण समाधानी आहात</p>					
17	<p>Satisfied with the employment opportunities made available in the college for the students महाविद्यालयातून आपण आपल्या पालाच्या रोजगार संधी बाबत समाधानी आहात</p>					
18	<p>Satisfied with the free and paid Consultancy Services offered in the college महाविद्यालयामार्फत मोफत व विकत पुरविणाऱ्या पुरविल्या जाणाऱ्या सेवांबाबत आपण समाधानी आहात</p>					
19	<p>Satisfied with the social activities taken up by the College महाविद्यालयामार्फत राबविल्या जाणाऱ्या सामाजिक उपक्रमाबाबत आपण समाधानी आहात</p>					
20	<p>Full contribution for the overall development of the College is ensured. महाविद्यालयाच्या संपूर्ण विकासात आपण सहभागी होता</p>					
21	<p>Suggestions for the holistic development of the college. पुढील काळात विकासाच्या दृष्टीने काही सूचना द्या</p> <hr/> <hr/> <hr/> <hr/>					
<p>Signature</p>						



JEEVAN VIKAS MAHAVIDYALYA, DEVGRAM

(NAAC Accredited in Cycle II with 'B++' Grade, CGPA 2.93)

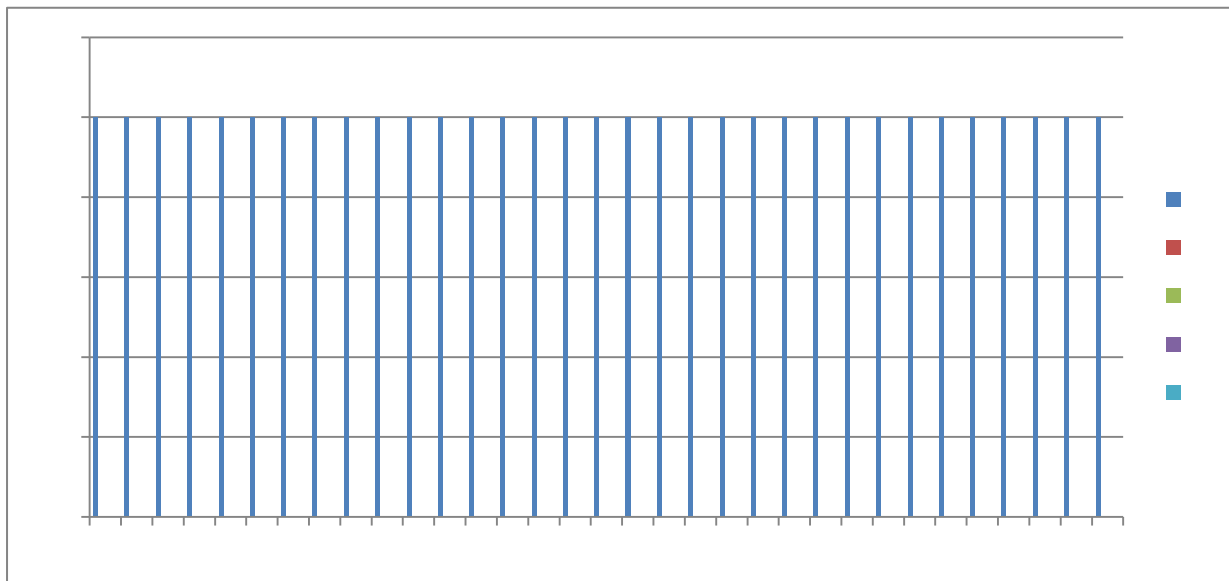
Internal Quality Assurance Mechanism aims at Continuous Improvement for Academic Excellence and Results
Academic Session – 2022-23

Feedback of Management on College

Feedback Analysis

Management have given their Responses on a 5 -point Likert Scale for-

Option A- Strongly agree-	5.00
Option B- Agree-	0.00
Option C- Neither agree nor disagree -	0.00
Option D- Disagree-	0.00
Option E- Strongly disagree-	0.00



On X-axis – Question number

On Y-axis- Response in %

- A- Strongly agree
- B- Agree
- C- Neither agree nor disagree
- D- Disagree
- E- Strongly disagree

For question 1 – 100% management members strongly agreed.

Interpretation- 100% management member strongly agreed that the college strives to fulfill the objectives for which it has been started.

For question 2 – 100% management members strongly agreed.

Interpretation- 100% management members strongly agreed that students of the college pursue intellectual, social and cultural programmes apart from being part of teaching-learning & evaluation processes.

For question 3 – 100% management members agreed.

Interpretation- 100% management members agreed that the administration of the college encourages ICT in imparting quality education.

For question 4 – 100% management members strongly agreed.

Interpretation- 100% management members strongly agreed that apart from regular academic guidance students are sensitized towards intellectual, social and cultural heritage of India as well as the entire world from time to time.

For question 5 – 100% management members strongly agreed.

Interpretation- 100% management members strongly agreed that the administration is committed in its outlook

For question 6 – 100% management members strongly agreed.

Interpretation- 100% management members strongly agreed that faculty is inclined towards research work and up-gradation of knowledge from time to time

For question 7 – 100% management members strongly agreed.

Interpretation- 100% management members strongly agreed that ample sports infrastructural facilities and opportunities are available for the students and staff of the college.

For question 8 – 100% management members strongly agreed.

Interpretation- 100% management members strongly agreed that scholarship facilities are provided to the students through various government schemes.

For question 9 – 100% management members strongly agreed.

Interpretation- 100% management members strongly agreed that separate washrooms are available for women faculty and girl students of the college.

For question 10 – 100% management members strongly agreed.

Interpretation- 100% management members strongly agreed that management is made aware of the day to day activities of the college.

For question 11– 100% management members strongly agreed.

Interpretation- 100% management members strongly agreed that dress code is implemented for the faculty as well as for the students.

For question 12 – 100% management members strongly agreed.

Interpretation- 100% management members strongly agreed that staff of the college is well versed with ICT.

For question 13– 100% management members strongly agreed.

Interpretation- 100% management members strongly agreed that the college indulges in its readiness in all areas to provide employment through quality education.

For question 14 – 100% management members strongly agreed.

Interpretation- 100% management members strongly agreed that implementation of various government schemes for the poor and needy students.

For question 15– 100% management members strongly agreed.

Interpretation- 100% management members strongly agreed that apart from imparting education, the college is active in its Institutional Social Responsibilities (ISR) towards the poor and the needy through its various outreach programmes.

For question 16– 100% management members agreed.

Interpretation- 100% management members agreed that contribution of alumni in promoting and shaping the future citizens of India.

For question 17 – 100% management members strongly agreed.

Interpretation- 100% management members strongly agreed that mutual trust, coordination and understanding among the teachers, students, parents and the alumni.

For question 18– 100% management members strongly agreed.

Interpretation- 100% management members strongly agreed that de-addiction programmes are organized in its letter and spirit.

For question 19– 100% management members strongly agreed.

Interpretation- 100% management members strongly agreed that striving hard to keep the campus eco- friendly and green.

For question 20– 100% management members strongly agreed.

Interpretation- 100% management members strongly agreed that self-financed courses are implemented.

For question 21– 100% management members strongly agreed.

Interpretation- 100% management members strongly agreed that students are benefited by various schemes/projects of the University Grants Commission.

For question 22 – 100% management members strongly agreed.

Interpretation- 100% management members strongly agreed that students are continuously motivated to carry research work with the faculty.

For question 23– 100% management members agreed.

Interpretation- 100% management members agreed that use of ICT in imparting quality education.

For question 24– 100% management members strongly agreed.

Interpretation- 100% management members strongly agreed that the institution is striving for getting the status of college with potential for excellence.

For question 25– 100% management members strongly agreed.

Interpretation- 100% management members strongly agreed that the college always bears in mind the mission and vision of the institute.

For question 26– 100% management members strongly agreed.

Interpretation- 100% management members strongly agreed that library and administration departments are computerized.

For question 27– 100% management members strongly agreed.

Interpretation- 100% management members strongly agreed that gym facility is available in the campus.

For question 28– 100% management members strongly agreed.

Interpretation- 100% management members strongly agreed that the college runs fully/ partially on solar/renewable energy

For question 29– 100% management members strongly agreed.

Interpretation- 100% management members strongly agreed that the college ensures water harvesting in the entire campus.

For question 30 – 100% management members strongly agreed.

Interpretation- 100% management members strongly agreed that the canteen services are in tandem with requirements and health of the students.

For question 31– 100% management members strongly agreed.

Interpretation- 100% management members strongly agreed that grievances“ of the employees are addressed from time to time.

For question 32 – 100% management members strongly agreed.

Interpretation- 100% management members strongly agreed that faculties are provided computers with updated technology.

For question 33– 100% management members strongly agreed.

Interpretation- 100% management members strongly agreed that women’s grievance cell functions in tandem with the rules laid down by the university.

Prepared and submitted by –
Dr. R. G. Shirame, Coordinator
Feedback Committee JVMD


Conveger
Internal Quality Assurance
Cell (IQAC), J.V.M. Thugsondeo
Dist. Nagpur (M.S.)




Principal
Jeevan Vikas Mahavidyalaya
Devgram (Thugsondeo)
Tal. Narkhed, Dist. Nagpur



JEEVAN VIKAS MAHAVIDYALYA, DEVGRAM

(NAAC Accredited in Cycle II with 'B++' Grade, CGPA 2.93)

Internal Quality Assurance Mechanism aims at Continuous Improvement for Academic Excellence and Results

Feedback of Management on College

Session – 2022-2023

Name: _____

Designation: _____

Kindly rate the performance on the following attributes on five point scale

Strongly agree- 5.00	Agree- 4.00	Neither agree nor disagree- 3.00	Disagree- 2.00	Strongly disagree- 1.0
A	B	C	D	E

Sr. No	Attributes	Marks				
		A	B	C	D	E
01	The college strives to fulfill the objectives for which it has been started. महाविद्यालय ज्या उदिष्टांसाठी सुरु केल्या गेले त्या उदिष्टांची पुरती करते					
02	Students of the college pursue intellectual, social and cultural programmes apart from being part of teaching-Learning & evaluation processes. शैक्षणिक प्रक्रीये व्यतिरिक्त महाविद्यालयीन विद्यार्थी बौद्धिक, सामाजिक आणि सांस्कृतिक कार्यक्रमात सहभागी होतात.					
03	The Administration of the college encourages ICT in imparting quality education. महाविद्यालय प्रशासन आधुनिक पद्धतीने गुणात्मक शिक्षण देण्यासाठी (ICT) ला प्रोत्साहित करते.					
04	Apart from regular academic guidance students are sensitized towards intellectual, social and cultural heritage of India as well as the entire world from time to time. महाविद्यालयातील विद्यार्थ्यांना शिक्षणाव्यतिरिक्त, भारतातील तसेच जगातील बौद्धिक, सामाजिक व सांस्कृतिक वारसा जपण्यासाठी वेळोवेळी जागरूक केल्या जाते.					
05	Administration is committed in its outlook महाविद्यालयीन प्रशासन व्यवस्था दृष्टीकोनात वचनबद्ध आहे.					
06						

	Faculty is inclined towards Research work and up-gradation of knowledge from time to time महाविद्यालयातील शिक्षक हे संशोधन आणि अद्यावत ज्ञान ग्रहण करण्याकरिता कार्यान्वित/प्रतिबद्ध आहे.					
07	Ample Sports infrastructural facilities and opportunities are available for the students and staff of the college. महाविद्यालय विद्यार्थ्यांना तसेच कर्मचार्यांना खेळाशी निगडित पुरेशा सोई सुविधा व संधी उपलब्ध करून देते.					
08	Scholarship facilities are provided to the students through various Government schemes विद्यार्थ्यांना शासनाच्या मार्फत विविध शिष्यवृत्ती महाविद्यालय उपलब्ध करून देते.					
09	Separate washrooms are available for women faculty and girl students of the college महाविद्यालयातील महिलांसाठी विद्यार्थिनींसाठी वेगळे प्रसाधन गृह आहे.					
10	Management is made aware of the day to day activities of the college. महाविद्यालयातील होणाऱ्या विविध उपक्रमाबाबत व्यवस्थापन समितीला माहिती दिली जाते.					
11	Dress code is implemented for the faculty as well as for the students महाविद्यालयातील शिक्षकांना व विद्यार्थ्यांना ड्रेस कोड लागू केले आहे.					
12	Staff of the college is well versed with ICT महाविद्यालयीन कर्मचारी माहिती संप्रेषण तंत्रज्ञानाच्या(आय.सी.टी.) बाबत उत्तम व निपुण आहे.					
13	The College indulges in its readiness in all areas to provide employment through quality education. महाविद्यालयातील विद्यार्थ्यांना गुणात्मक शिक्षणाद्वारे रोजगार प्राप्त करण्यास महाविद्यालय तत्पर आहे.					
14	Implementation of various Government schemes for the poor and needy students महाविद्यालय गरीब व गरजू विद्यार्थ्यांन करिता विविध सरकारी योजना कार्यान्वित करते.					
15	Apart from imparting education, the college is active in its Institutional Social Responsibilities (ISR) towards the poor and the needy through its various outreach programmes. शिक्षणा व्यतिरिक्त गावातील व झोपडपट्ट्यामधील लोकांकरिता सामाजिक उत्तरदायात्वांचा संस्थात्मक सामाजिक जबाबदारी (आय.एस.आर.) च्या माध्यमातून महाविद्यालय विविध कल्याणात्मक कार्यक्रम राबविते.					

16	<p>Contribution of Alumni in promoting and shaping the Future citizens of India</p> <p>महाविद्यालयातील माजी विद्यार्थी भारतातील भविष्यातील सुजन नागरिकांना आकार देण्यास कार्य करतात.</p>					
17	<p>Mutual trust, coordination and understanding among the teachers, students, parents and the alumni</p> <p>महाविद्यालयातील शिक्षक, विद्यार्थी व पालक महाविद्यालयाबाबत विश्वास संपादन करतात.</p>					
18	<p>De-addiction programmes are organized in its letter and spirit</p> <p>विद्यार्थी व कर्मचाऱ्यांसाठी नशाबंदी कार्यक्रम महाविद्यालय राबवीत आहे.</p>					
19	<p>Striving hard to keep the campus eco-friendly and green</p> <p>महाविद्यालयीन परिसराचे हिरवळीकरण व सौंदर्यीकरण करण्यासाठी महाविद्यालय प्रयत्नरत आहे.</p>					
20	<p>Self-financed courses are implemented</p> <p>महाविद्यालयांनी स्व-अर्थसहाय्य अभ्यासक्रम(सेल्फ फायानान्सील कोर्स) चालू केले आहे.</p>					
21	<p>Students are benefited by various schemes/projects of the University Grants Commission</p> <p>विद्यापीठ अनुदान आयोगाच्या विविध योजनांचा फायदा विद्यार्थ्यांना पोहचत आहे.</p>					
22	<p>Students are continuously motivated to carry Research work with the faculty.</p> <p>विद्यार्थ्यांना शिक्षकांसोबत संशोधन करण्यास प्रोत्साहित केले जाते</p>					
23	<p>Use of ICT in imparting quality education.</p> <p>महाविद्यालयामध्ये विद्यार्थ्यांच्या शैक्षणिक कार्यामध्ये अत्याधुनिक तंत्रज्ञानाचा (आय.सी.टी.) वापर करण्यात येते</p>					
24	<p>The Institution is striving for getting the status of College with Potential for Excellence. महाविद्यालय पोटेंशियल एक्सलन्स मिळविण्याकरीता प्रयत्न करत आहे</p>					
25	<p>The college always bears in mind the mission and vision of the Institute.</p> <p>महाविद्यालय सदैव महाविद्यालयाचे व्हिजन आणि मिशन लक्षात ठेवून कार्य करते</p>					
26	<p>Library and Administration departments are computerized.</p> <p>ग्रंथालय आणि प्रशासन विभाग संगणकीकृत करण्यात आले आहे</p>					

